

Datasheet for ABIN522155
anti-PAGE1 antibody (AA 1-146)

3 Images

[Go to Product page](#)

Overview

Quantity:	50 µg
Target:	PAGE1
Binding Specificity:	AA 1-146
Reactivity:	Human
Host:	Mouse
Clonality:	Polyclonal
Conjugate:	This PAGE1 antibody is un-conjugated
Application:	Western Blotting (WB), Immunohistochemistry (Paraffin-embedded Sections) (IHC (p))

Product Details

Purpose:	Mouse polyclonal antibody raised against a full-length human PAGE1 protein.
Immunogen:	PAGE1 (NP_003776.2, 1 a.a. ~ 146 a.a) full-length human protein.
Sequence:	MGFLRRLIYR RRPMIYVESS EESSDEQPDE VESPTQSQDS TPAEEREDEG ASAAQQQEPE ADSQELVQPK TGCELGDGPD TKRVCLRNEE QMKLPAEGPE PEADSQEQVH PKTGCERGDG PDVQELGLPN PEEVKTPPEED EGQSQP
Cross-Reactivity:	Human
Characteristics:	Antibody reactive against mammalian transfected lysate.

Target Details

Target:	PAGE1
---------	-------

Target Details

Alternative Name:	PAGE1 (PAGE1 Products)
Background:	Full Gene Name: P antigen family, member 1 (prostate associated) Synonyms: GAGE-9,GAGEB1,PAGE-1
Gene ID:	8712
NCBI Accession:	NM_003785

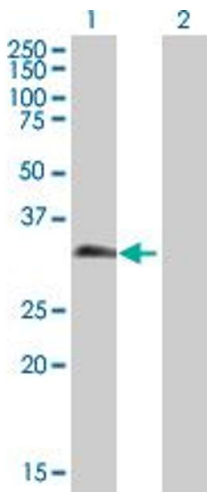
Application Details

Application Notes:	Optimal working dilution should be determined by the investigator.
Restrictions:	For Research Use only

Handling

Buffer:	In 1x PBS, pH 7.4
Handling Advice:	Aliquot to avoid repeated freezing and thawing.
Storage:	-20 °C
Storage Comment:	Store at -20°C or lower. Aliquot to avoid repeated freezing and thawing.

Images

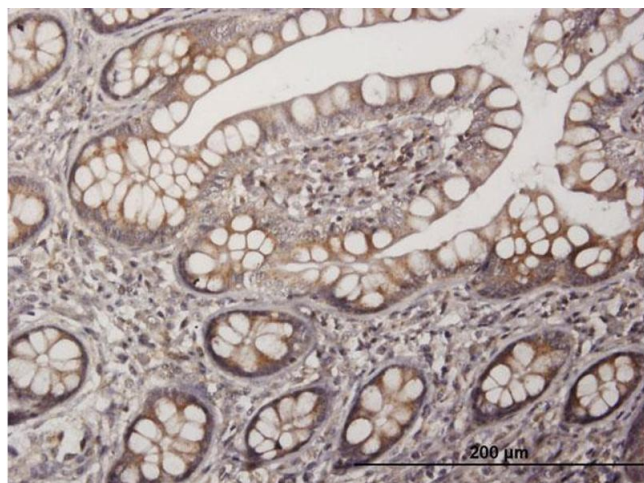


Western Blotting

Image 1. Western Blot analysis of PAGE1 expression in transfected 293T cell line by PAGE1 MaxPab polyclonal antibody.

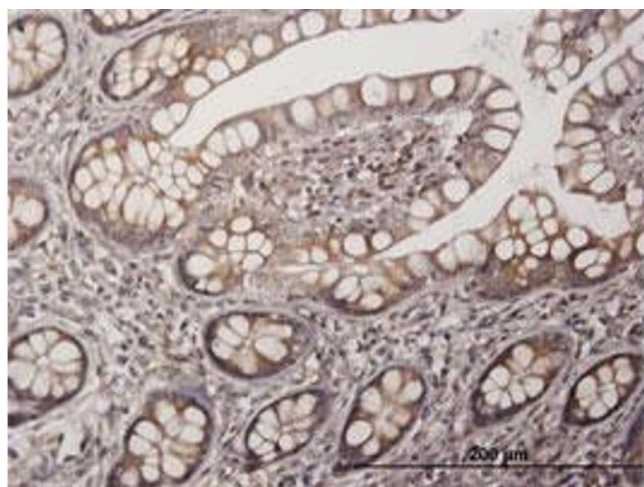
Lane 1: PAGE1 transfected lysate(16.06 kDa).

Lane 2: Non-transfected lysate.



Immunostaining

Image 2. Immunoperoxidase of purified MaxPab antibody to PAGE1 on formalin-fixed paraffin-embedded human small Intestine. [antibody concentration 3 μg/ml]



Immunohistochemistry (Formalin-fixed Paraffin-embedded Sections)

Image 3. Immunoperoxidase of purified MaxPab antibody to PAGE1 on formalin-fixed paraffin-embedded human small Intestine. (antibody concentration 3 μg/mL)