



[Go to Product page](#)

Datasheet for ABIN522249

anti-SUCLG2 antibody (AA 1-384)

1 Image

Overview

Quantity:	50 µg
Target:	SUCLG2
Binding Specificity:	AA 1-384
Reactivity:	Human
Host:	Mouse
Clonality:	Polyclonal
Conjugate:	This SUCLG2 antibody is un-conjugated
Application:	Western Blotting (WB)

Product Details

Purpose:	Mouse polyclonal antibody raised against a full-length human SUCLG2 protein.
Immunogen:	SUCLG2 (NP_003839.1, 1 a.a. ~ 384 a.a) full-length human protein.
Sequence:	MSDNGVRVQR FFVADTANEA LEAAKRLNAK EIVLKAQILA GGRGKGVFNS GLKGGVHLTK DPNVVQQLAK QMIGYNLTK QTPKEGVKVN KVMVAEALDI SRETYLAILM DRSCNGPVLV GSPQGGVDIE EVAASNPELI FKEQIDIFEG IKDSQAQRMA ENLGFVGPLK SQAADQITKL YNLFLKIDAT QVEVNPFGET PEGQVVCFDA KINFDDNAEF RQKDIFAMDD KSENEPIENE AAKYDLKYIG LDGNIACFVN GAGLAMATCD IIFLNGGKPA NFLDLGGGVK EAQVYQAFKL LTADPKVEAI LVNIFGGIVN CAIANGITK ACRELELKVP LVVRLEGTNV QEAQKILNNS GLPITSAIDL EDAACKAVAS VAKK
Cross-Reactivity:	Human
Characteristics:	Antibody reactive against mammalian transfected lysate.

Target Details

Target:	SUCLG2
Alternative Name:	SUCLG2 (SUCLG2 Products)
Background:	Full Gene Name: succinate-CoA ligase, GDP-forming, beta subunit Synonyms: G-BETA
Gene ID:	8801
NCBI Accession:	NM_003848

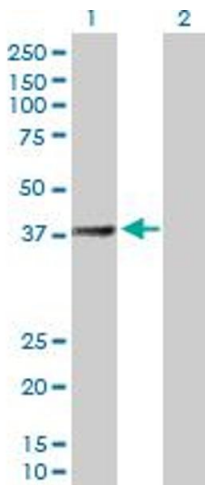
Application Details

Application Notes:	Optimal working dilution should be determined by the investigator.
Restrictions:	For Research Use only

Handling

Buffer:	In 1x PBS, pH 7.4
Handling Advice:	Aliquot to avoid repeated freezing and thawing.
Storage:	-20 °C
Storage Comment:	Store at -20°C or lower. Aliquot to avoid repeated freezing and thawing.

Images



Western Blotting

Image 1. Western Blot analysis of SUCLG2 expression in transfected 293T cell line by SUCLG2 MaxPab polyclonal antibody.

Lane 1: SUCLG2 transfected lysate(42.24 KDa).

Lane 2: Non-transfected lysate.