



Datasheet for ABIN522257
anti-CDKL1 antibody (AA 259-358)



[Go to Product page](#)

1 Image

Overview

Quantity:	200 µL
Target:	CDKL1
Binding Specificity:	AA 259-358
Reactivity:	Human
Host:	Mouse
Clonality:	Monoclonal
Conjugate:	This CDKL1 antibody is un-conjugated
Application:	Western Blotting (WB), ELISA

Product Details

Purpose:	Mouse monoclonal antibody raised against a partial recombinant CDKL1.
Immunogen:	CDKL1 (NP_004187, 259 a.a. ~ 358 a.a) partial recombinant protein with GST tag. MW of the GST tag alone is 26 KDa.
Sequence:	YPALGLLKGC LHMDPTQRLT CEQLLHHPYF ENIREIEDLA KEHNKPTRKT LRKSRKHHCF TETSKLQYLP QLTGSSILPA LDNKKYYCDT KKLNYRFPNI
Clone:	8B2
Isotype:	IgG2b kappa
Cross-Reactivity:	Human

Target Details

Target:	CDKL1
Alternative Name:	CDKL1 (CDKL1 Products)
Background:	Full Gene Name: cyclin-dependent kinase-like 1 (CDC2-related kinase) Synonyms: KKIALRE,p42
Gene ID:	8814
NCBI Accession:	NP_004187 , NM_004196

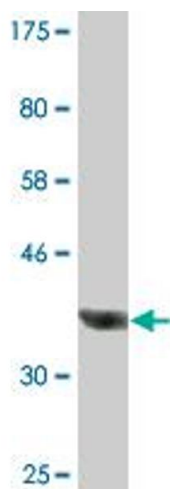
Application Details

Application Notes:	Optimal working dilution should be determined by the investigator.
Comment:	Product Quality tested by: Antibody Reactive Against Recombinant Protein.
Restrictions:	For Research Use only

Handling

Format:	Liquid
Buffer:	In ascites fluid
Handling Advice:	Aliquot to avoid repeated freezing and thawing.
Storage:	-20 °C
Storage Comment:	Store at -20°C or lower. Aliquot to avoid repeated freezing and thawing.

Images



Western Blotting

Image 1. Western Blot detection against Immunogen (36.63 kDa) .