

Datasheet for ABIN522267
anti-CES2 antibody (AA 1-623)



[Go to Product page](#)

2 Images

Overview

Quantity:	50 µg
Target:	CES2
Binding Specificity:	AA 1-623
Reactivity:	Human
Host:	Mouse
Clonality:	Polyclonal
Conjugate:	This CES2 antibody is un-conjugated
Application:	Western Blotting (WB)

Product Details

Purpose:	Mouse polyclonal antibody raised against a full-length human CES2 protein.
Immunogen:	CES2 (NP_003860.2, 1 a.a. ~ 623 a.a) full-length human protein.
Sequence:	MTAQRSPTT PTFPGPSQRT PLTPCPVQTP RLGKALHCW TDPGQPLGEQ QRVRRQRTET SEPTMRLHRL RARLSAVACG LLLLLVRGQG QDSASPIRTT HTGQVLGSLV HVKGANAGVQ TFLGIPFAKP PLGPLRFAPP EPPESWSGVR DGTTHPAMCL QDLTAVESEF LSQFNMTFPS DSMSDCLYL SIYTPAHSHE GSNLPVMVWI HGGALVFGMA SLYDGSMMLAA LENVVVVIQ YRLGVLGFFS TGDKHATGNW GYLDQVAALR WVQQNIAHFG GNPDRVITIFG ESAGGTSVSS LVVSPISQGL FHGAIMESGV ALLPGLIASS ADVISTVVAN LSACDQVDSE ALVGCLRKGS KEEILAINKP FKMIPGVVDG VFLPRHPQEL LASADFQVPV SIVGVNNNEF GWLIPKVMRI YDTQKEMDRE ASQAALQKML TLLMLPPTFG DLLREEYIGD NGDPQTLQAQ FQEMMADSMF VIPALQVAHF QCSRAPVYFY EFQHQPWLK NIRPPHMKAD HGDELFPVFR SFFGGNYIKF TEEEQLSRK MMKYWANFAR NGNPNGEGLP HWPLFDQEEQ YLQLNLQPAV GRALKAHRLQ

Product Details

FWKKALPQKI QELEEPEERH TEL

Cross-Reactivity: Human

Characteristics: Antibody reactive against mammalian transfected lysate.

Target Details

Target: CES2

Alternative Name: CES2 ([CES2 Products](#))

Background: Full Gene Name: carboxylesterase 2 (intestine, liver)

Synonyms: CE-2,CES2A1,PCE-2,iCE

Gene ID: 8824

NCBI Accession: [NM_003869](#)

Application Details

Application Notes: Optimal working dilution should be determined by the investigator.

Restrictions: For Research Use only

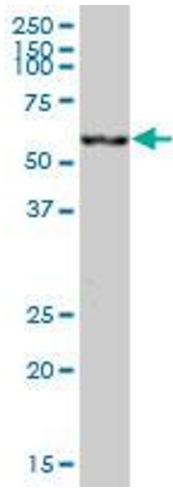
Handling

Buffer: In 1x PBS, pH 7.4

Handling Advice: Aliquot to avoid repeated freezing and thawing.

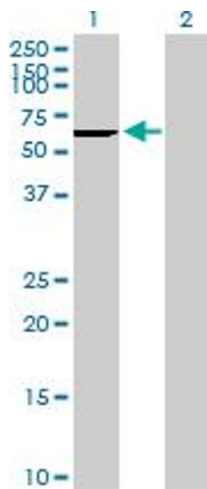
Storage: -20 °C

Storage Comment: Store at -20°C or lower. Aliquot to avoid repeated freezing and thawing.



Western Blotting

Image 1. CES2 MaxPab polyclonal antibody. Western Blot analysis of CES2 expression in human liver.



Western Blotting

Image 2. Western Blot analysis of CES2 expression in transfected 293T cell line by CES2 MaxPab polyclonal antibody.

Lane1:CES2 transfected lysate(68.53 KDa).

Lane2:Non-transfected lysate.