



[Go to Product page](#)

Datasheet for ABIN522281  
**anti-TMEM11 antibody (AA 1-192)**

1 Image

Overview

Quantity:	50 µg
Target:	TMEM11
Binding Specificity:	AA 1-192
Reactivity:	Human
Host:	Mouse
Clonality:	Polyclonal
Conjugate:	This TMEM11 antibody is un-conjugated
Application:	Western Blotting (WB)

Product Details

Purpose:	Mouse polyclonal antibody raised against a full-length human TMEM11 protein.
Immunogen:	TMEM11 (NP_003867.1, 1 a.a. ~ 192 a.a) full-length human protein.
Sequence:	MAAWGRRRLG PGSSGGSARE RVLSATDCY IVHEIYNGEN AQDQFEYELE QALEAQYKYI VIEPTRIGDE TARWITVGNC LHKTAVLAGT ACLFTPLALP LDYSHYISLP AGVLSLACCT LYGISWQFDP CCKYQVEYDA YKLSRLPLHT LTSSTPVVLV RKDDLHRKRL HNTIALAALV YCVKKIYELY AV
Cross-Reactivity:	Human
Characteristics:	Antibody reactive against mammalian transfected lysate.

Target Details

Target:	TMEM11
---------	--------

## Target Details

Alternative Name:	TMEM11 ( <a href="#">TMEM11 Products</a> )
Background:	Full Gene Name: transmembrane protein 11 Synonyms: C17orf35,PM1,PMI
Gene ID:	8834
NCBI Accession:	<a href="#">NM_003876</a>

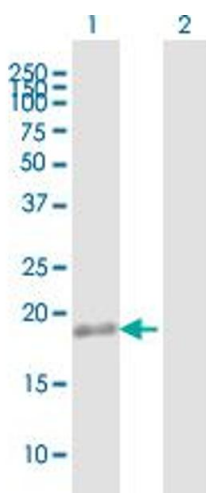
## Application Details

Application Notes:	Optimal working dilution should be determined by the investigator.
Restrictions:	For Research Use only

## Handling

Buffer:	In 1x PBS, pH 7.4
Handling Advice:	Aliquot to avoid repeated freezing and thawing.
Storage:	-20 °C
Storage Comment:	Store at -20°C or lower. Aliquot to avoid repeated freezing and thawing.

## Images



### Western Blotting

**Image 1.** Western Blot analysis of TMEM11 expression in transfected 293T cell line by TMEM11 MaxPab polyclonal antibody.

Lane 1: TMEM11 transfected lysate(21.50 KDa).

Lane 2: Non-transfected lysate.