



Datasheet for ABIN522300
anti-TSC22D1 antibody (AA 1-144)



[Go to Product page](#)

3 Images

Overview

Quantity:	100 µL
Target:	TSC22D1
Binding Specificity:	AA 1-144
Reactivity:	Human
Host:	Rabbit
Clonality:	Polyclonal
Conjugate:	This TSC22D1 antibody is un-conjugated
Application:	Western Blotting (WB), Immunoprecipitation (IP)

Product Details

Purpose:	Rabbit polyclonal antibody raised against a full-length human TSC22D1 protein.
Immunogen:	TSC22D1 (NP_006013.1, 1 a.a. ~ 144 a.a) full-length human protein.
Sequence:	MKSQWCRPVA MDLGVYQLRH FSISFLSSLL GTENASVRLD NSSSGASVVA IDNKIEQAMD LVKSHLMYAV REEVEVLKEQ IKELIEKNSQ LEQENLLKT LASPEQLAQF QAQLQTGSPP ATTQPQGTTQ PPAQPASQGS GPTA
Cross-Reactivity:	Human
Characteristics:	Antibody reactive against mammalian transfected lysate.

Target Details

Target:	TSC22D1
---------	---------

Target Details

Alternative Name:	TSC22D1 (TSC22D1 Products)
Background:	Full Gene Name: TSC22 domain family, member 1 Synonyms: DKFZp686O19206,MGC17597,RP11-269C23.2,TGFB114,TSC22
Gene ID:	8848
NCBI Accession:	NM_006022

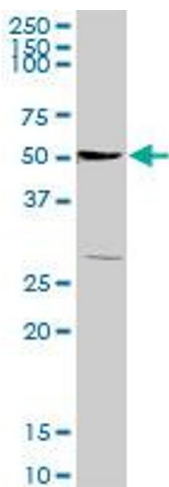
Application Details

Application Notes:	Optimal working dilution should be determined by the investigator.
Restrictions:	For Research Use only

Handling

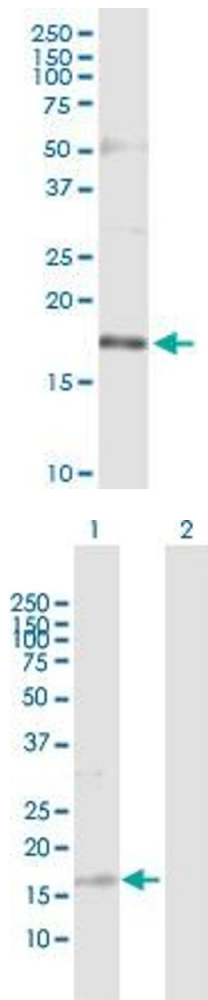
Format:	Liquid
Buffer:	No additive
Preservative:	Without preservative
Handling Advice:	Aliquot to avoid repeated freezing and thawing.
Storage:	-20 °C
Storage Comment:	Store at -20°C or lower. Aliquot to avoid repeated freezing and thawing.

Images



Western Blotting

Image 1. TSC22D1 MaxPab rabbit polyclonal antibody. Western Blot analysis of TSC22D1 expression in HeLa S3 NE.



Immunoprecipitation

Image 2. Immunoprecipitation of TSC22D1 transfected lysate using anti-TSC22D1 MaxPab rabbit polyclonal antibody and Protein A Magnetic Bead, and immunoblotted with TSC22D1 purified MaxPab mouse polyclonal antibody (B01P).

Western Blotting

Image 3. Western Blot analysis of TSC22D1 expression in transfected 293T cell line by TSC22D1 MaxPab polyclonal antibody.

Lane 1: TSC22D1 transfected lysate(15.7 KDa).

Lane 2: Non-transfected lysate.