

Datasheet for ABIN522311
anti-KAT2B antibody (AA 367-432)



[Go to Product page](#)

1 Image

Overview

Quantity:	100 µg
Target:	KAT2B
Binding Specificity:	AA 367-432
Reactivity:	Human
Host:	Mouse
Clonality:	Monoclonal
Conjugate:	This KAT2B antibody is un-conjugated
Application:	Western Blotting (WB), ELISA

Product Details

Purpose:	Mouse monoclonal antibody raised against a full-length recombinant PCAF.
Immunogen:	PCAF (NP_003875, 367 a.a. ~ 432 a.a) full-length recombinant protein with GST tag. MW of the GST tag alone is 26 KDa.
Sequence:	QDFLSASSRT SQLGIQTVIN PPPVAGTISY NSTSSSLEQP NAGSSSPACK ASSGLE
Clone:	1C9
Isotype:	IgG2b
Cross-Reactivity:	Human
Characteristics:	Antibody Reactive Against Recombinant Protein.

Target Details

Target:	KAT2B
Alternative Name:	KAT2B (KAT2B Products)
Background:	Full Gene Name: K(lysine) acetyltransferase 2B Synonyms: CAF,P,P/CAF,PCAF
Gene ID:	8850
NCBI Accession:	NM_003884
Pathways:	p53 Signaling , Regulation of Carbohydrate Metabolic Process

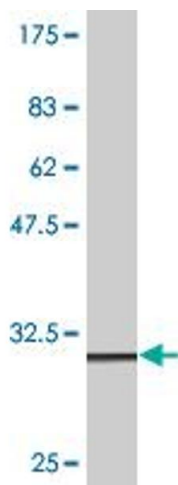
Application Details

Application Notes:	Optimal working dilution should be determined by the investigator.
Restrictions:	For Research Use only

Handling

Buffer:	In 1x PBS, pH 7.4
Handling Advice:	Aliquot to avoid repeated freezing and thawing.
Storage:	-20 °C
Storage Comment:	Store at -20°C or lower. Aliquot to avoid repeated freezing and thawing.

Images



Western Blotting

Image 1. Western Blot detection against Immunogen (32.01 kDa).