



[Go to Product page](#)

Datasheet for ABIN522329

## anti-Apelin antibody (AA 1-122)

### 1 Image

#### Overview

Quantity:	100 µg
Target:	Apelin (APLN)
Binding Specificity:	AA 1-122
Reactivity:	Human
Host:	Rabbit
Clonality:	Polyclonal
Conjugate:	This Apelin antibody is un-conjugated
Application:	Western Blotting (WB)

#### Product Details

Purpose:	Rabbit polyclonal antibody raised against a full-length human APLN protein.
Immunogen:	APLN (AAH21104.1, 1 a.a. ~ 122 a.a) full-length human protein.
Sequence:	MSATWCSPGQGMGQPGRE VGGNSAASGP ASPIRDPCLS EAGLKGPPSA HPRRLCLLHR LVCFSGGLTS IQLSPRTCCS HQWAQLFSPA CFPQWRAPGC SLDDSRSLTR IRPVHLPGPS LD
Cross-Reactivity:	Human
Characteristics:	Antibody reactive against mammalian transfected lysate.

#### Target Details

Target:	Apelin (APLN)
Alternative Name:	APLN ( <a href="#">APLN Products</a> )

## Target Details

Background: Full Gene Name: apelin  
Synonyms: XNPEP2

Gene ID: 8862

Pathways: [Positive Regulation of Peptide Hormone Secretion](#), [Hormone Activity](#), [Feeding Behaviour](#)

## Application Details

Application Notes: Optimal working dilution should be determined by the investigator.

Restrictions: For Research Use only

## Handling

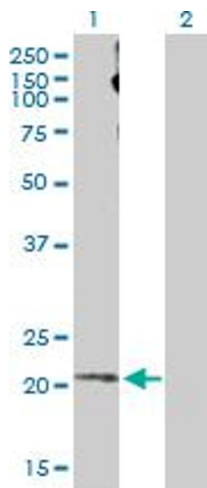
Buffer: In 1x PBS, pH 7.4

Handling Advice: Aliquot to avoid repeated freezing and thawing.

Storage: -20 °C

Storage Comment: Store at -20°C or lower. Aliquot to avoid repeated freezing and thawing.

## Images



### Western Blotting

**Image 1.** Western Blot analysis of APLN expression in transfected 293T cell line by APLN MaxPab polyclonal antibody.

Lane 1: APLN transfected lysate(13.53 kDa).

Lane 2: Non-transfected lysate.