



[Go to Product page](#)

Datasheet for ABIN522397  
**anti-SGCE antibody (AA 1-437)**

1 Image

Overview

Quantity:	100 µg
Target:	SGCE
Binding Specificity:	AA 1-437
Reactivity:	Human
Host:	Rabbit
Clonality:	Polyclonal
Conjugate:	This SGCE antibody is un-conjugated
Application:	Western Blotting (WB)

Product Details

Purpose:	Rabbit polyclonal antibody raised against a full-length human SGCE protein.
Immunogen:	SGCE (NP_003910.1, 1 a.a. ~ 437 a.a) full-length human protein.
Sequence:	<p>MLQPRWWELG DPCAWTGQGR GTRRMSPATT GTFLLTVYSI FSKVHSDRNV YPSAGVLFVH VLEREYFKGE FPPYPKPGEI SNDPITFNTN LMGYPDRPGW LRYIQRTPYS DGVLYGSPTA ENVGKPTIIE ITAYNRRTFE TARHNLIIINI MSAEDFPLPY QAEFFIKNMN VEEMPLASEVL GDFLGAVKNV WQPERLNAIN ITSALDRGGR VPLPINDLKE GVYVMVGADV PFSSCLREVE NPQNQLRCSQ EMEPVITCDK KFRTQFYIDW CKISLVDKTK QVSTYQEVIR GEGILPDGGE YKPPSDSLKS RDYYTDFLIT LAVPSAVALV LFLILAYIMC CRREGVEKRN MQTPDIQLVH HSAIQKSTKE LRDMSKNREI AWPLSTLPVF HPVTGEIIPP LHTDNYDSTN MPLMQTQQNL PHQTQIPQQQ TTGKWYP</p>
Cross-Reactivity:	Human

## Product Details

Characteristics: Antibody reactive against mammalian transfected lysate.

## Target Details

Target: SGCE

Alternative Name: SGCE ([SGCE Products](#))

Background: Full Gene Name: sarcoglycan, epsilon  
Synonyms: DYT11,ESG

Gene ID: 8910

NCBI Accession: [NM\\_003919](#)

## Application Details

Application Notes: Optimal working dilution should be determined by the investigator.

Restrictions: For Research Use only

## Handling

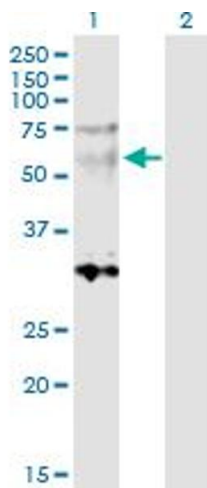
Buffer: In 1x PBS, pH 7.4

Handling Advice: Aliquot to avoid repeated freezing and thawing.

Storage: -20 °C

Storage Comment: Store at -20°C or lower. Aliquot to avoid repeated freezing and thawing.

## Images



### Western Blotting

**Image 1.** Western Blot analysis of SGCE expression in transfected 293T cell line by SGCE MaxPab polyclonal antibody.

Lane 1: SGCE transfected lysate(49.90 KDa).

Lane 2: Non-transfected lysate.