

Datasheet for ABIN522405  
**anti-SNURF antibody (AA 1-240)**



[Go to Product page](#)

2 Images

Overview

Quantity:	50 µL
Target:	SNURF
Binding Specificity:	AA 1-240
Reactivity:	Human
Host:	Mouse
Clonality:	Polyclonal
Conjugate:	This SNURF antibody is un-conjugated
Application:	Western Blotting (WB), Immunofluorescence (IF)

Product Details

Purpose:	Mouse polyclonal antibody raised against a full-length human SNURF protein.
Immunogen:	SNURF (AAH24777, 1 a.a. ~ 240 a.a) full-length human protein.
Sequence:	MTVGKSSKML QHIDYRMRCI LQDGRIFIGT FKAFDKHMNL ILCDCDEFK IKPKNAKQPE REEKRVLGLV LLRGENLVSM TVEGPPPKDT GIARVPLAGA AGGPGVGRAA GRGVPAGVPI PQAPAGLAGP VRGVGGPSQQ VMTPQGRGTV AAAAVAATAS IAGAPTQYPP GRGTPPPPPVG RATPPPGIMA PPPGMRPPMG PPIGLPPARG TPIGMPPPGM RPPPPGIRGP PPPGMRPPRP
Cross-Reactivity:	Human
Characteristics:	Antibody reactive against mammalian transfected lysate.

Target Details

Target:	SNURF
---------	-------

## Target Details

Alternative Name:	SNURF ( <a href="#">SNURF Products</a> )
Background:	Full Gene Name: SNRPN upstream reading frame Synonyms:
Gene ID:	8926

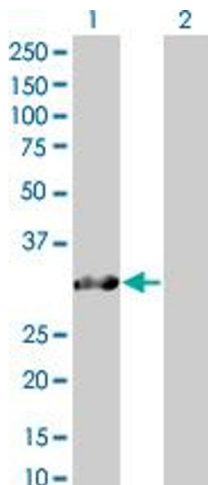
## Application Details

Application Notes:	Optimal working dilution should be determined by the investigator.
Restrictions:	For Research Use only

## Handling

Format:	Liquid
Buffer:	No additive
Preservative:	Without preservative
Handling Advice:	Aliquot to avoid repeated freezing and thawing.
Storage:	-20 °C
Storage Comment:	Store at -20°C or lower. Aliquot to avoid repeated freezing and thawing.

## Images

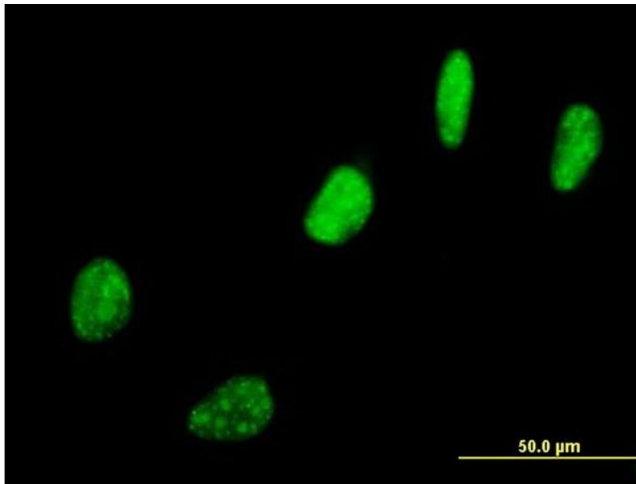


### Western Blotting

**Image 1.** Western Blot analysis of SNURF expression in transfected 293T cell line by SNURF MaxPab polyclonal antibody.

Lane 1: SNURF transfected lysate(26.51 kDa).

Lane 2: Non-transfected lysate.



### Immunofluorescence

**Image 2.** Immunofluorescence of purified MaxPab antibody to SNURF on HeLa cell. [antibody concentration 10 µg/ml]