



[Go to Product page](#)

Datasheet for ABIN522407

anti-CXX1 antibody (AA 1-209)

1 Image

Overview

Quantity:	50 µg
Target:	CXX1 (FAM127A)
Binding Specificity:	AA 1-209
Reactivity:	Human
Host:	Mouse
Clonality:	Polyclonal
Conjugate:	This CXX1 antibody is un-conjugated
Application:	Western Blotting (WB)

Product Details

Purpose:	Mouse polyclonal antibody raised against a full-length human CXX1 protein.
Immunogen:	CXX1 (AAH02410, 1 a.a. ~ 209 a.a) full-length human protein.
Sequence:	MGGGRLLGR ETLGPGGGCS GEGPLCYWPP PGSPAPSLR ASLPLEPPRC PLRSCSLPRS ACLCSRNSAP GSCCRPWASL WSEPPSPSS QPAPPMYIWT LSCAPAASWA PVTHWTDHPL PPLPSPLLPT RLPDDYIILP TDLRCHSHRH PSHPTDRLLL LVIWTHLGGI WAGHSPWTVI QTAGRPPRDL SPSARPISSP PPETSCVLA
Cross-Reactivity:	Human
Characteristics:	Antibody reactive against mammalian transfected lysate.

Target Details

Target:	CXX1 (FAM127A)
---------	----------------

Target Details

Alternative Name:	FAM127A (FAM127A Products)
Background:	Full Gene Name: family with sequence similarity 127, member A Synonyms: CXX1,MAR8C,MART8C,MGC117411,Mar8,Mart8
Gene ID:	8933

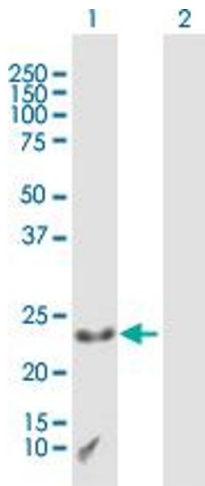
Application Details

Application Notes:	Optimal working dilution should be determined by the investigator.
Restrictions:	For Research Use only

Handling

Buffer:	In 1x PBS, pH 7.4
Handling Advice:	Aliquot to avoid repeated freezing and thawing.
Storage:	-20 °C
Storage Comment:	Store at -20°C or lower. Aliquot to avoid repeated freezing and thawing.

Images



Western Blotting

Image 1. Western Blot analysis of CXX1 expression in transfected 293T cell line by CXX1 MaxPab polyclonal antibody.

Lane 1: CXX1 transfected lysate(22.99 kDa).

Lane 2: Non-transfected lysate.