



[Go to Product page](#)

Datasheet for ABIN522424
anti-H1FX antibody (AA 1-213)

3 Images

Overview

Quantity:	50 µg
Target:	H1FX
Binding Specificity:	AA 1-213
Reactivity:	Human
Host:	Mouse
Clonality:	Polyclonal
Conjugate:	This H1FX antibody is un-conjugated
Application:	Western Blotting (WB), Immunofluorescence (IF)

Product Details

Purpose:	Mouse polyclonal antibody raised against a full-length human H1FX protein.
Immunogen:	H1FX (NP_006017.1, 1 a.a. ~ 213 a.a) full-length human protein.
Sequence:	MSVELEEALP VTTAEGMAKK VTKAGGSAAL SPSKRRKNSK KKNQPGKYSQ LVVETIRRLG ERNGSSLAKI YTEAKKVPWF DQQNGRITYLK YSIKALVQND TLLQVKGTGA NGSFKLNRKK LEGGGERRGA PAAATAPAPT AHKAKKAAPG AAGSRRADKK PARGQKPEQR SHKKGAGAKK DKGGKAKKTA AAGGKKVKKA AKPSVPKVPK GRK
Cross-Reactivity:	Human
Characteristics:	Antibody reactive against mammalian transfected lysate.

Target Details

Target:	H1FX
---------	------

Target Details

Alternative Name:	H1FX (H1FX Products)
Background:	Full Gene Name: H1 histone family, member X Synonyms: H1X,MGC15959,MGC8350
Gene ID:	8971
NCBI Accession:	NM_006026

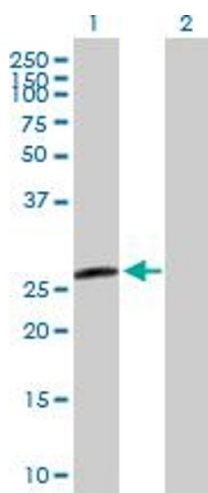
Application Details

Application Notes:	Optimal working dilution should be determined by the investigator.
Restrictions:	For Research Use only

Handling

Buffer:	In 1x PBS, pH 7.4
Handling Advice:	Aliquot to avoid repeated freezing and thawing.
Storage:	-20 °C
Storage Comment:	Store at -20°C or lower. Aliquot to avoid repeated freezing and thawing.

Images

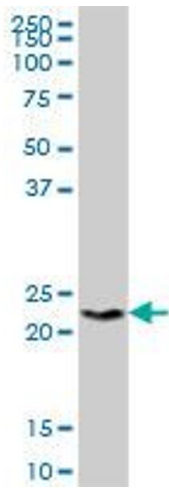


Western Blotting

Image 1. Western Blot analysis of H1FX expression in transfected 293T cell line by H1FX MaxPab polyclonal antibody.

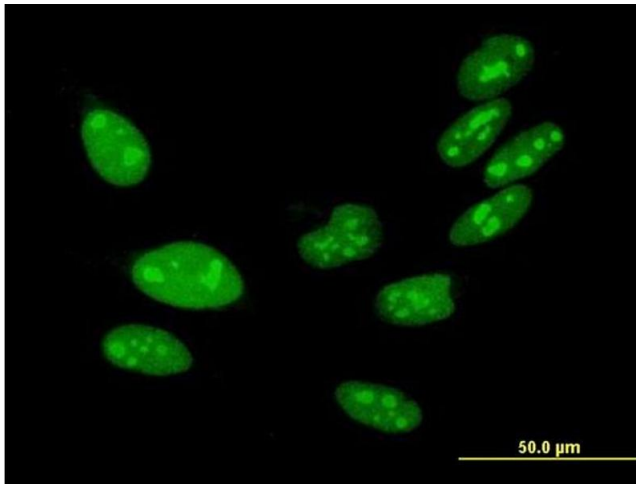
Lane 1: H1FX transfected lysate(23.43 KDa).

Lane 2: Non-transfected lysate.



Western Blotting

Image 2. H1FX MaxPab polyclonal antibody. Western Blot analysis of H1FX expression in human placenta.



Immunofluorescence

Image 3. Immunofluorescence of purified MaxPab antibody to H1FX on HeLa cell. [antibody concentration 10 ug/ml]