



[Go to Product page](#)

Datasheet for ABIN522430

anti-STBD1 antibody (AA 1-358)

2 Images

Overview

Quantity:	100 µL
Target:	STBD1
Binding Specificity:	AA 1-358
Reactivity:	Human
Host:	Rabbit
Clonality:	Polyclonal
Conjugate:	This STBD1 antibody is un-conjugated
Application:	Western Blotting (WB), Immunoprecipitation (IP)

Product Details

Purpose:	Rabbit polyclonal antibody raised against a full-length human STBD1 protein.
Immunogen:	STBD1 (NP_003934.1, 1 a.a. ~ 358 a.a) full-length human protein.
Sequence:	MGAVWSALLV GGGLAGALFV WLLRGGPGDT GKDGDAEQEK DAPLGAAIP GGHQSGSSGL SPGPSGQELV TKPEHLQESN GHLISKTKDL GKLQAASWRL QNPSREVCND SREHVPSGQF PDTEAPATSE TSNSRSYSEV SRNESLESPM GEWGFQKGQE ISAKAATCFA EKLPSNLLK NRAKEEMSLS DLNSQDRVDH EEWEMVPRHS SWGDVGVGGS LKAPVLNLNQ GMDNGRSTLV EARGQQVHGK MERVAVMPAG SQQVSVRFQV HYVTSTDVQF IAVTGDHECL GRWNTYIPLH YNKDGFWSHS IFLPADTVVE WKFVLVENG VTRWEECSNR FLETGHEDKV VHAWWGIH
Cross-Reactivity:	Human
Characteristics:	Antibody reactive against mammalian transfected lysate.

Target Details

Target:	STBD1
Alternative Name:	STBD1 (STBD1 Products)
Background:	Full Gene Name: starch binding domain 1 Synonyms: FLJ41801,GENEX3414,GENX-3414
Gene ID:	8987
NCBI Accession:	NM_003943

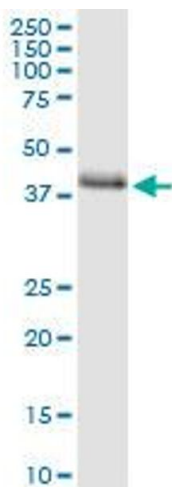
Application Details

Application Notes:	Optimal working dilution should be determined by the investigator.
Restrictions:	For Research Use only

Handling

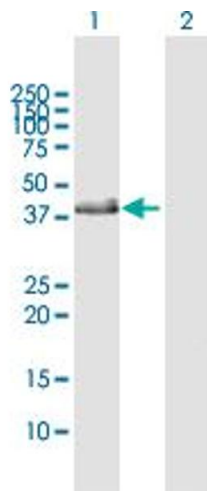
Format:	Liquid
Buffer:	No additive
Preservative:	Without preservative
Handling Advice:	Aliquot to avoid repeated freezing and thawing.
Storage:	-20 °C
Storage Comment:	Store at -20°C or lower. Aliquot to avoid repeated freezing and thawing.

Images



Immunoprecipitation

Image 1. Immunoprecipitation of STBD1 transfected lysate using anti-STBD1 MaxPab rabbit polyclonal antibody and Protein A Magnetic Bead , and immunoblotted with STBD1 MaxPab mouse polyclonal antibody (B01) .



Western Blotting

Image 2. Western Blot analysis of STBD1 expression in transfected 293T cell line by STBD1 MaxPab polyclonal antibody.

Lane 1: STBD1 transfected lysate(39 KDa).

Lane 2: Non-transfected lysate.