



[Go to Product page](#)

Datasheet for ABIN522435
anti-PGLYRP1 antibody (AA 1-196)

1 Image

Overview

Quantity:	50 µL
Target:	PGLYRP1
Binding Specificity:	AA 1-196
Reactivity:	Human
Host:	Mouse
Clonality:	Polyclonal
Conjugate:	This PGLYRP1 antibody is un-conjugated
Application:	Western Blotting (WB)

Product Details

Purpose:	Mouse polyclonal antibody raised against a full-length human PGLYRP1 protein.
Immunogen:	PGLYRP1 (NP_005082, 1 a.a. ~ 196 a.a) full-length human protein.
Sequence:	MSRRSMLLAW ALPSLLRLGA AQETEDPACC SPIVPRNEWK ALASECAQHL SLPLRYVVVS HTAGSSCNTP ASCQQQARNV QHYHMKTLGW CDVGYNFLIG EDGLVYEGRG WNFTGAHSGH LWNPMSIGIS FMGNYMDRVP TPQAIRAAQG LLACGVAQGA LRSNYVLKGH RDVQRTLSPG NQLYHLIQNW PHYRSP
Cross-Reactivity:	Human
Characteristics:	Antibody reactive against mammalian transfected lysate.

Target Details

Target:	PGLYRP1
---------	---------

Target Details

Alternative Name:	PGLYRP1 (PGLYRP1 Products)
Background:	Full Gene Name: peptidoglycan recognition protein 1 Synonyms: MGC126894,MGC126896,PGLYRP,PGRP,PGRP-S,PGRPS,TAG7,TNFSF3L
Gene ID:	8993
NCBI Accession:	NM_005091
Pathways:	Activation of Innate immune Response

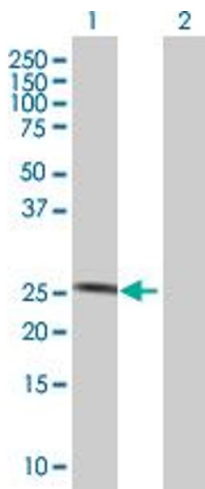
Application Details

Application Notes:	Optimal working dilution should be determined by the investigator.
Restrictions:	For Research Use only

Handling

Format:	Liquid
Buffer:	No additive
Preservative:	Without preservative
Handling Advice:	Aliquot to avoid repeated freezing and thawing.
Storage:	-20 °C
Storage Comment:	Store at -20°C or lower. Aliquot to avoid repeated freezing and thawing.

Images



Western Blotting

Image 1. Western Blot analysis of PGLYRP1 expression in transfected 293T cell line by PGLYRP1 MaxPab polyclonal antibody.

Lane 1: PGLYRP1 transfected lysate(21.56 KDa).

Lane 2: Non-transfected lysate.