



[Go to Product page](#)

Datasheet for ABIN522438

anti-LIMD1 antibody (AA 577-674)

5 Images

Overview

Quantity:	100 µg
Target:	LIMD1
Binding Specificity:	AA 577-674
Reactivity:	Human
Host:	Mouse
Clonality:	Monoclonal
Conjugate:	This LIMD1 antibody is un-conjugated
Application:	Western Blotting (WB), ELISA, Immunohistochemistry (Paraffin-embedded Sections) (IHC (p)), Immunofluorescence (IF)

Product Details

Purpose:	Mouse monoclonal antibody raised against a partial recombinant LIMD1.
Immunogen:	LIMD1 (NP_055055.1, 577 a.a. ~ 674 a.a) partial recombinant protein with GST tag. MW of the GST tag alone is 26 KDa.
Sequence:	VDSENKIYCV RDYHKVLAPK CAACGLPILP PEGSDETIRV VSMRDYHVE CYHCEDCGLE LNDEGDHRCY PLEDHLFCHS CHVKRLEKRP SSTALHQH
Clone:	2G5
Isotype:	IgG2b
Cross-Reactivity:	Human
Characteristics:	Antibody Reactive Against Recombinant Protein.

Target Details

Target:	LIMD1
Alternative Name:	LIMD1 (LIMD1 Products)
Background:	Full Gene Name: LIM domains containing 1 Synonyms:
Gene ID:	8994
NCBI Accession:	NM_014240
Pathways:	Ribonucleoprotein Complex Subunit Organization

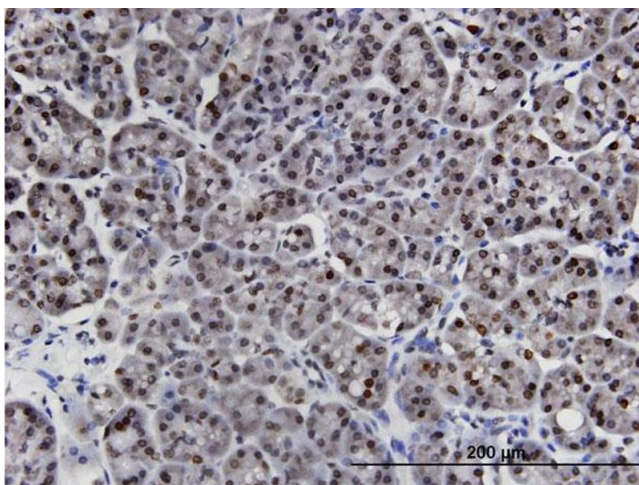
Application Details

Application Notes:	Optimal working dilution should be determined by the investigator.
Restrictions:	For Research Use only

Handling

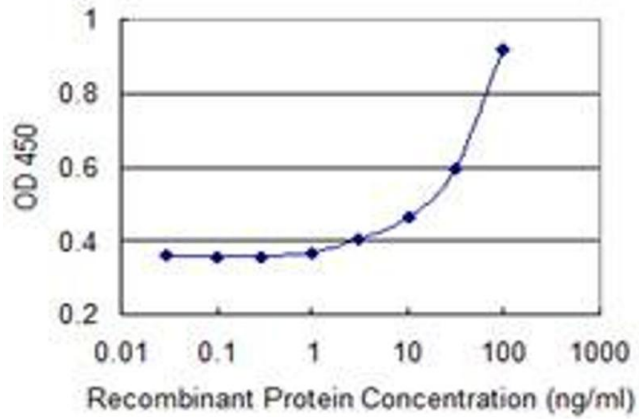
Buffer:	In 1x PBS, pH 7.4
Handling Advice:	Aliquot to avoid repeated freezing and thawing.
Storage:	-20 °C
Storage Comment:	Store at -20°C or lower. Aliquot to avoid repeated freezing and thawing.

Images



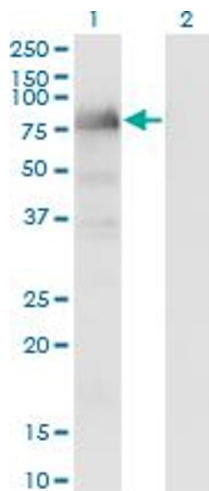
Immunostaining

Image 1. Immunoperoxidase of monoclonal antibody to LIMD1 on formalin-fixed paraffin-embedded human pancreas. [antibody concentration 3 ug/ml]



ELISA

Image 2. Detection limit for recombinant GST tagged LIMD1 is 1 ng/ml as a capture antibody.



Western Blotting

Image 3. Western Blot analysis of LIMD1 expression in transfected 293T cell line by LIMD1 monoclonal antibody (M01), clone 2G5.

Lane 1: LIMD1 transfected lysate (Predicted MW: 72.2 KDa).

Lane 2: Non-transfected lysate.

Please check the [product details page](#) for more images. Overall 5 images are available for ABIN522438.