



[Go to Product page](#)

Datasheet for ABIN522463
anti-CLIC3 antibody (AA 137-236)

2 Images

Overview

Quantity:	100 µg
Target:	CLIC3
Binding Specificity:	AA 137-236
Reactivity:	Human
Host:	Mouse
Clonality:	Monoclonal
Conjugate:	This CLIC3 antibody is un-conjugated
Application:	Western Blotting (WB), ELISA

Product Details

Purpose:	Mouse monoclonal antibody raised against a partial recombinant CLIC3.
Immunogen:	CLIC3 (NP_004660, 137 a.a. ~ 236 a.a) partial recombinant protein with GST tag. MW of the GST tag alone is 26 KDa.
Sequence:	RLDSYLRAPL EHELAGEPQL RESRRRFLDG DRLTLADCSL LPKLHIVDTV CAHFRQAPIP AELRGVRRYL DSAMQEKEFK YTCPHSAEIL AAYRPAVHPR
Clone:	2C5
Isotype:	IgG1
Cross-Reactivity:	Human
Characteristics:	Antibody Reactive Against Recombinant Protein.

Target Details

Target:	CLIC3
Alternative Name:	CLIC3 (CLIC3 Products)
Background:	Full Gene Name: chloride intracellular channel 3 Synonyms:
Gene ID:	9022
NCBI Accession:	NM_004669

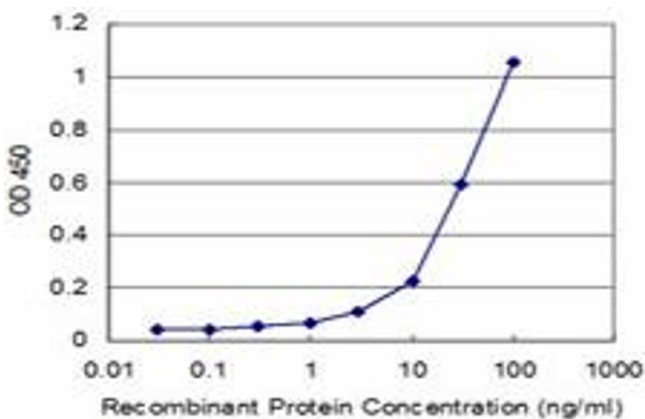
Application Details

Application Notes:	Optimal working dilution should be determined by the investigator.
Restrictions:	For Research Use only

Handling

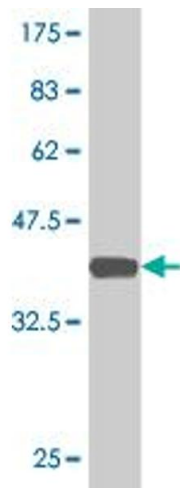
Buffer:	In 1x PBS, pH 7.4
Handling Advice:	Aliquot to avoid repeated freezing and thawing.
Storage:	-20 °C
Storage Comment:	Store at -20°C or lower. Aliquot to avoid repeated freezing and thawing.

Images



ELISA

Image 1. Detection limit for recombinant GST tagged CLIC3 is approximately 3ng/ml as a capture antibody.



Western Blotting

Image 2. Western Blot detection against Immunogen (36.74 kDa).