



[Go to Product page](#)

Datasheet for ABIN522476

anti-CCRL2 antibody (AA 1-344)

2 Images

Overview

Quantity:	50 µg
Target:	CCRL2
Binding Specificity:	AA 1-344
Reactivity:	Human
Host:	Mouse
Clonality:	Polyclonal
Conjugate:	This CCRL2 antibody is un-conjugated
Application:	Western Blotting (WB), Flow Cytometry (FACS)

Product Details

Purpose:	Mouse polyclonal antibody raised against a full-length human CCRL2 protein.
Immunogen:	CCRL2 (NP_003956, 1 a.a. ~ 344 a.a) full-length human protein.
Sequence:	MANYTLAPED EYDVLIEGEL ESDEAEQCDK YDAQALSAQL VPSLCSAVFV IGVLNLLVW LILVKYKGLK RVENIYLLNL AVSNLCFLLT LPFWAHAGGD PMCKILIGLY FVGLYSETFF NCLLTVQRYL VFLHKGNNFFS ARRRVPCGII TSVLAWVTAI LATLPEFVVY KPQMEDQKYK CAFSRTPFLP ADETFWKHFL TLKMNISVLV LPLFIFTFLY VQMRKTLRFR EQRYSLFKLV FAIMVVFLLM WAPYNIFFL STFKEHFSL S DCKSSYNLDK SVHITKLIAT THCCINPLLY AFLDGTFSKY LCRCFHLSN TPLQPRGQSA QGTSREEPDH STEV
Cross-Reactivity:	Human, Mouse, Rat
Characteristics:	Antibody reactive against mammalian transfected lysate.

Target Details

Target:	CCRL2
Alternative Name:	CCRL2 (CCRL2 Products)
Background:	Full Gene Name: chemokine (C-C motif) receptor-like 2 Synonyms: CKRX,CRAM-A,CRAM-B,FLJ55815,HCR,MGC116710
Gene ID:	9034
NCBI Accession:	NM_003965

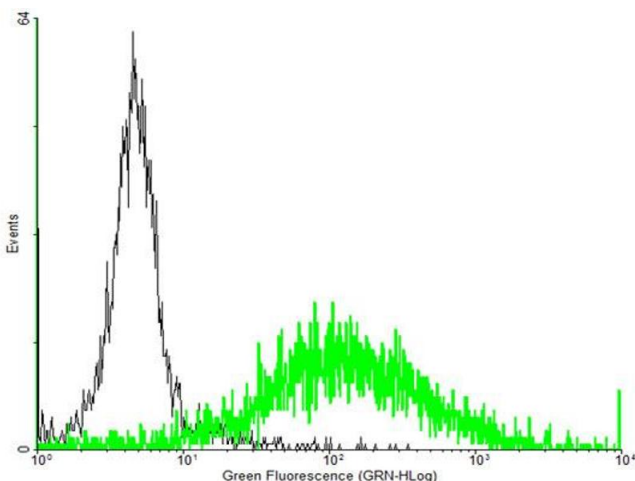
Application Details

Application Notes:	Optimal working dilution should be determined by the investigator.
Restrictions:	For Research Use only

Handling

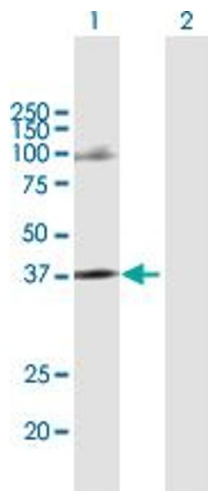
Buffer:	In 1x PBS, pH 7.4
Handling Advice:	Aliquot to avoid repeated freezing and thawing.
Storage:	-20 °C
Storage Comment:	Store at -20°C or lower. Aliquot to avoid repeated freezing and thawing.

Images



Flow Cytometry

Image 1. FACS analysis of negative control 293 cells (Black) and CCRL2 expressing 293 cells (Green) using CCRL2 purified MaxPab mouse polyclonal antibody.



Western Blotting

Image 2. Western Blot analysis of CCRL2 expression in transfected 293T cell line by CCRL2 MaxPab polyclonal antibody.

Lane 1: CCRL2 transfected lysate(37.84 KDa).

Lane 2: Non-transfected lysate.