



[Go to Product page](#)

Datasheet for ABIN522497

anti-SLC13A2 antibody (AA 146-220)

1 Image

1 Publication

Overview

Quantity:	50 µL
Target:	SLC13A2
Binding Specificity:	AA 146-220
Reactivity:	Human
Host:	Mouse
Clonality:	Polyclonal
Conjugate:	This SLC13A2 antibody is un-conjugated
Application:	Western Blotting (WB), ELISA

Product Details

Purpose:	Mouse polyclonal antibody raised against a partial recombinant SLC13A2.
Immunogen:	SLC13A2 (NP_003975, 146 a.a. ~ 220 a.a) partial recombinant protein with GST tag.
Sequence:	AMMVPIAHAV LDQLHSSQAS SNVEEGSNNP TFELQEPSPQ KEVTKLDNGQ ALPVTASSE GRAHLSQKHL HLTQC
Cross-Reactivity:	Human
Characteristics:	Antibody Reactive Against Recombinant Protein.

Target Details

Target:	SLC13A2
Alternative Name:	SLC13A2 (SLC13A2 Products)

Target Details

Background: Full Gene Name: solute carrier family 13 (sodium-dependent dicarboxylate transporter), member 2
Synonyms: NADC1,NaDC-1

Gene ID: 9058

NCBI Accession: [NM_003984](#)

Application Details

Application Notes: Optimal working dilution should be determined by the investigator.

Restrictions: For Research Use only

Handling

Format: Liquid

Buffer: 50 % glycerol

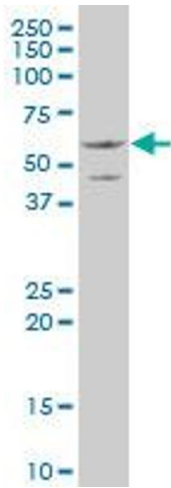
Handling Advice: Aliquot to avoid repeated freezing and thawing.

Storage: -20 °C

Storage Comment: Store at -20°C or lower. Aliquot to avoid repeated freezing and thawing.

Publications

Product cited in: Bergeron, Bürzle, Kovacs, Simonin, Hediger: "Synthesis, maturation, and trafficking of human Na⁺-dicarboxylate cotransporter NaDC1 requires the chaperone activity of cyclophilin B." in: **The Journal of biological chemistry**, Vol. 286, Issue 13, pp. 11242-53, (2011) ([PubMed](#)).



Western Blotting

Image 1. SLC13A2 polyclonal antibody (A01), Lot # 061130JCS1 Western Blot analysis of SLC13A2 expression in MCF-7 .