



[Go to Product page](#)

Datasheet for ABIN522518
anti-Claudin 1 antibody (AA 1-211)

6 Images

Overview

Quantity:	100 µg
Target:	Claudin 1 (CLDN1)
Binding Specificity:	AA 1-211
Reactivity:	Human
Host:	Mouse
Clonality:	Monoclonal
Conjugate:	This Claudin 1 antibody is un-conjugated
Application:	Western Blotting (WB), ELISA, Immunofluorescence (IF), Immunoprecipitation (IP)

Product Details

Purpose:	Mouse monoclonal antibody raised against a full-length recombinant CLDN1.
Immunogen:	CLDN1 (AAH12471.1, 1 a.a. ~ 211 a.a) full-length recombinant protein with GST tag. MW of the GST tag alone is 26 KDa.
Sequence:	MANAGLQLLG FILAFLGWIG AIVSTALPQW RIYSYAGDNI VTAQAMYEGL WMSCVSQSTG QIQCKVFDSL LNLSSTLQAT RALMVVGILL GVIAIFVATV GMKCMKCLEDEVQKMRMAV IGGAIFFLLAG LAILVATAWY GNRIVQEFYD PMTPVNARYE FGQALFTGWA AASLCLLGGA LLCCSCPRKT TSYPTPRPYP KPAPSSGKDY V
Clone:	2E2-H5
Isotype:	IgG2b
Cross-Reactivity:	Human

Product Details

Characteristics: Antibody Reactive Against Recombinant Protein.

Target Details

Target: Claudin 1 (CLDN1)

Alternative Name: CLDN1 ([CLDN1 Products](#))

Background: Full Gene Name: claudin 1
Synonyms: CLD1,ILVASC,SEMP1

Gene ID: 9076

Pathways: [Cell-Cell Junction Organization, Hepatitis C](#)

Application Details

Application Notes: Optimal working dilution should be determined by the investigator.

Restrictions: For Research Use only

Handling

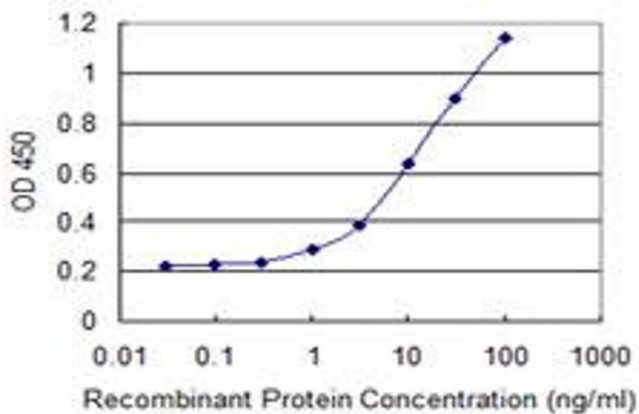
Buffer: In 1x PBS, pH 7.4

Handling Advice: Aliquot to avoid repeated freezing and thawing.

Storage: -20 °C

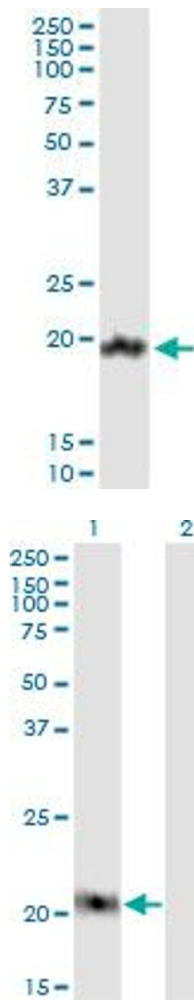
Storage Comment: Store at -20°C or lower. Aliquot to avoid repeated freezing and thawing.

Images



ELISA

Image 1. Detection limit for recombinant GST tagged CLDN1 is 0.3 ng/ml as a capture antibody.



Immunoprecipitation

Image 2. Immunoprecipitation of CLDN1 transfected lysate using anti-CLDN1 monoclonal antibody and Protein A Magnetic Bead , and immunoblotted with CLDN1 MaxPab rabbit polyclonal antibody.

Western Blotting

Image 3. Western Blot analysis of CLDN1 expression in transfected 293T cell line by CLDN1 monoclonal antibody (M02), clone 2E2-H5.

Lane 1: CLDN1 transfected lysate (Predicted MW: 22.7 kDa).

Lane 2: Non-transfected lysate.

Please check the [product details page](#) for more images. Overall 6 images are available for ABIN522518.