



[Go to Product page](#)

Datasheet for ABIN522551
anti-MTMR6 antibody (AA 1-621)

2 Images

Overview

Quantity:	50 µg
Target:	MTMR6
Binding Specificity:	AA 1-621
Reactivity:	Human
Host:	Mouse
Clonality:	Polyclonal
Conjugate:	This MTMR6 antibody is un-conjugated
Application:	Western Blotting (WB)

Product Details

Purpose:	Mouse polyclonal antibody raised against a full-length human MTMR6 protein.
Immunogen:	MTMR6 (AAH40012.1, 1 a.a. ~ 621 a.a) full-length human protein.
Sequence:	MEHIRTTKVE QVKLLDRFST SNKSLTGTLY LTATHLLFID SHQKETWILH HHIASVEKLA LTTSGCPLVI QCKNFRTVHF IVPRE RDCHD IYNSLLQLSK QAKYEDLYAF SYNPKQNDSE RLQGWQLIDL AEEYKRMGVP NSHWQLSDAN RDYKICETYP RELYVPRIAS KPIIVGSSKF RSKGRFPVLS YYHQDKEAAI CRCSQPLSGF SARCLEDEHL LQAISKANPV NRYMYVMDTR PKLNAMANRA AGKGYENEDN YSNIRFQFVG IENIHVMRSS LQKLLVNGT KGLSVNDFYS GLESSGWL RH IKAVMDAAVF LAKAITVENA SVLVHCSDGW DRTSQVCSLG SLLLDSSYRT IKGFMV LIEK DWISFGHKFS ERGQLDGDGP KEVSPVFTQF LECVWHLTEQ FPQAFEFSEA FLLQIHEHIH SCQFGNFLGN CQKEREELKL KEKTYSLWPF LLEDQKKYLN PLYSSESHRF TVLEPNTVSF NFKFWRNMYH QFDRTLHPRQ SVFNII MNMN EQNKQLEKDI KDLESKIKQR KNKQTDGILT KELLHSVHPE SPNLKTS LCF KEQTLLPVND ALRTIEGSSP ADNRYSEYAE

Product Details

EFSKSEPAVV SLEYGVARMT C

Cross-Reactivity: Human

Characteristics: Antibody reactive against mammalian transfected lysate.

Target Details

Target: MTMR6

Alternative Name: MTMR6 ([MTMR6 Products](#))

Background: Full Gene Name: myotubularin related protein 6
Synonyms:

Gene ID: 9107

NCBI Accession: [NM_004685](#)

Pathways: [Inositol Metabolic Process](#)

Application Details

Application Notes: Optimal working dilution should be determined by the investigator.

Restrictions: For Research Use only

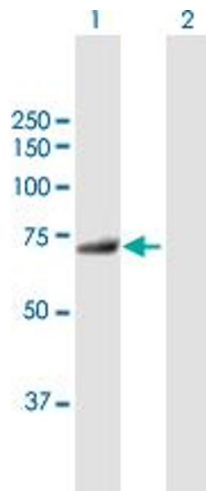
Handling

Buffer: In 1x PBS, pH 7.4

Handling Advice: Aliquot to avoid repeated freezing and thawing.

Storage: -20 °C

Storage Comment: Store at -20°C or lower. Aliquot to avoid repeated freezing and thawing.

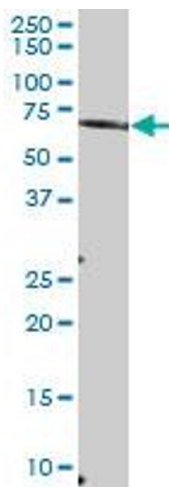


Western Blotting

Image 1. Western Blot analysis of MTMR6 expression in transfected 293T cell line by MTMR6 MaxPab polyclonal antibody.

Lane 1: MTMR6 transfected lysate(68.31 KDa).

Lane 2: Non-transfected lysate.



Western Blotting

Image 2. MTMR6 MaxPab polyclonal antibody. Western Blot analysis of MTMR6 expression in human kidney.