



[Go to Product page](#)

Datasheet for ABIN522561

## anti-MTA1 antibody (AA 601-700)

### 7 Images

#### Overview

Quantity:	100 µg
Target:	MTA1
Binding Specificity:	AA 601-700
Reactivity:	Human
Host:	Mouse
Clonality:	Monoclonal
Conjugate:	This MTA1 antibody is un-conjugated
Application:	Western Blotting (WB), ELISA, Immunohistochemistry (Paraffin-embedded Sections) (IHC (p))

#### Product Details

Purpose:	Mouse monoclonal antibody raised against a partial recombinant MTA1.
Immunogen:	MTA1 (NP_004680, 601 a.a. ~ 700 a.a) partial recombinant protein with GST tag. MW of the GST tag alone is 26 KDa.
Sequence:	MPSRGLANHG QTRHMGPSRN LLLNGKSYPT KVRLIRGGSL PPVKRRRMNW IDAPDDVFYM ATEETRKIRK LLSSSETKRA ARRPYKPIAL RQSQUALPPRP
Clone:	4D5
Isotype:	IgG3
Cross-Reactivity:	Human, Mouse, Rat
Characteristics:	Antibody Reactive Against Recombinant Protein.

## Target Details

Target:	MTA1
Alternative Name:	MTA1 ( <a href="#">MTA1 Products</a> )
Background:	Full Gene Name: metastasis associated 1 Synonyms:
Gene ID:	9112
NCBI Accession:	<a href="#">NM_004689</a>
Pathways:	<a href="#">Chromatin Binding</a>

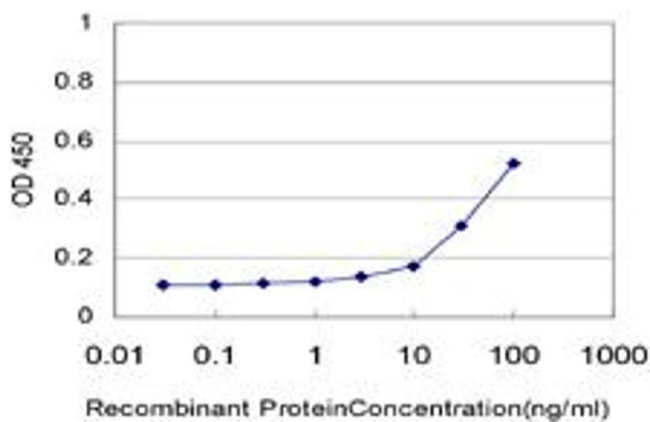
## Application Details

Application Notes:	Optimal working dilution should be determined by the investigator.
Restrictions:	For Research Use only

## Handling

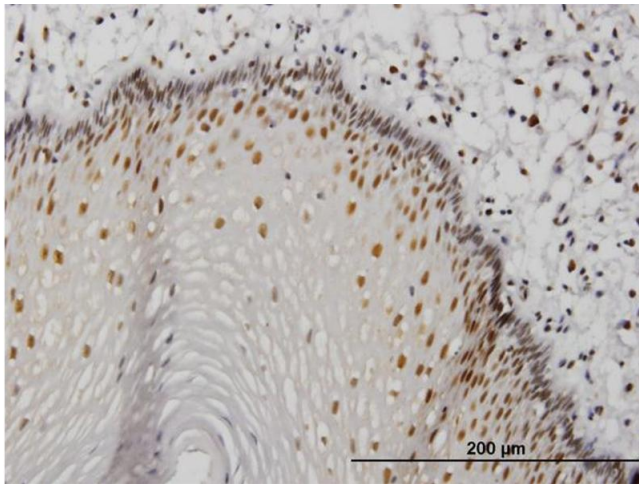
Buffer:	In 1x PBS, pH 7.4
Handling Advice:	Aliquot to avoid repeated freezing and thawing.
Storage:	-20 °C
Storage Comment:	Store at -20°C or lower. Aliquot to avoid repeated freezing and thawing.

## Images



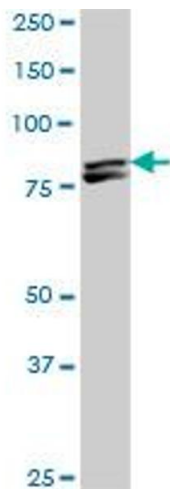
### ELISA

**Image 1.** Detection limit for recombinant GST tagged MTA1 is approximately 3ng/ml as a capture antibody.



### Immunostaining

**Image 2.** Immunoperoxidase of monoclonal antibody to MTA1 on formalin-fixed paraffin-embedded human esophagus. [antibody concentration 1.2 ug/ml]



### Western Blotting

**Image 3.** MTA1 monoclonal antibody (M01), clone 4D5. Western Blot analysis of MTA1 expression in NIH/3T3 .

Please check the [product details page](#) for more images. Overall 7 images are available for ABIN522561.