



[Go to Product page](#)

Datasheet for ABIN522562
anti-MTA1 antibody (AA 601-700)

1 Image

Overview

Quantity:	200 µL
Target:	MTA1
Binding Specificity:	AA 601-700
Reactivity:	Human
Host:	Mouse
Clonality:	Monoclonal
Conjugate:	This MTA1 antibody is un-conjugated
Application:	Western Blotting (WB), ELISA

Product Details

Purpose:	Mouse monoclonal antibody raised against a partial recombinant MTA1.
Immunogen:	MTA1 (NP_004680, 601 a.a. ~ 700 a.a) partial recombinant protein with GST tag. MW of the GST tag alone is 26 KDa.
Sequence:	MPSRGLANHG QTRHMGPSRN LLLNGKSYPT KVRLIRGGSL PPVKRRRMNW IDAPDDVFYM ATEETRKIRK LLSSSETKRA ARRPYKPIAL RQSQUALPPRP
Clone:	3A3
Isotype:	IgG1 kappa
Cross-Reactivity:	Human

Target Details

Target:	MTA1
Alternative Name:	MTA1 (MTA1 Products)
Background:	Full Gene Name: metastasis associated 1 Synonyms:
Gene ID:	9112
NCBI Accession:	NP_004680 , NM_004689
Pathways:	Chromatin Binding

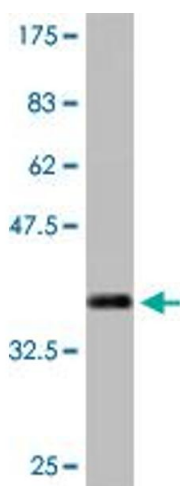
Application Details

Application Notes:	Optimal working dilution should be determined by the investigator.
Comment:	Product Quality tested by: Antibody Reactive Against Recombinant Protein.
Restrictions:	For Research Use only

Handling

Format:	Liquid
Buffer:	In ascites fluid
Handling Advice:	Aliquot to avoid repeated freezing and thawing.
Storage:	-20 °C
Storage Comment:	Store at -20°C or lower. Aliquot to avoid repeated freezing and thawing.

Images



Western Blotting

Image 1. Western Blot detection against Immunogen (36.74 kDa).