



[Go to Product page](#)

Datasheet for ABIN522568
anti-LATS1 antibody (AA 521-620)

3 Images

Overview

Quantity:	100 µg
Target:	LATS1
Binding Specificity:	AA 521-620
Reactivity:	Human
Host:	Mouse
Clonality:	Monoclonal
Conjugate:	This LATS1 antibody is un-conjugated
Application:	Western Blotting (WB), ELISA

Product Details

Purpose:	Mouse monoclonal antibody raised against a partial recombinant LATS1.
Immunogen:	LATS1 (NP_004681, 521 a.a. ~ 620 a.a) partial recombinant protein with GST tag. MW of the GST tag alone is 26 KDa.
Sequence:	PQPIQTVQPS PFPEGTASNV TVMPPVAEAP NYQGPPPPYP KHLLHQNPSV PPYESISKPS KEDQPSLPKE DESEKSYENV DSGDKEKKQI TTSPITVRKN
Clone:	3A7
Isotype:	IgG2a
Cross-Reactivity:	Human
Characteristics:	Antibody Reactive Against Recombinant Protein.

Target Details

Target:	LATS1
Alternative Name:	LATS1 (LATS1 Products)
Background:	Full Gene Name: LATS, large tumor suppressor, homolog 1 (Drosophila) Synonyms: WARTS, wts
Gene ID:	9113
NCBI Accession:	NM_004690
Pathways:	Regulation of Actin Filament Polymerization , Maintenance of Protein Location

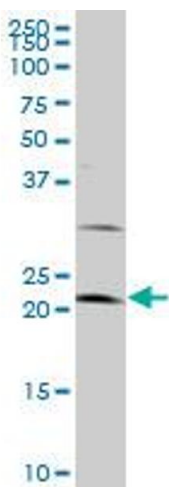
Application Details

Application Notes:	Optimal working dilution should be determined by the investigator.
Restrictions:	For Research Use only

Handling

Buffer:	In 1x PBS, pH 7.4
Handling Advice:	Aliquot to avoid repeated freezing and thawing.
Storage:	-20 °C
Storage Comment:	Store at -20°C or lower. Aliquot to avoid repeated freezing and thawing.

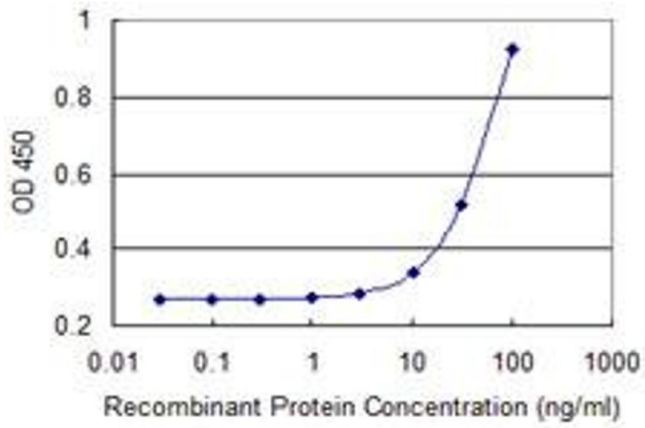
Images



Western Blotting

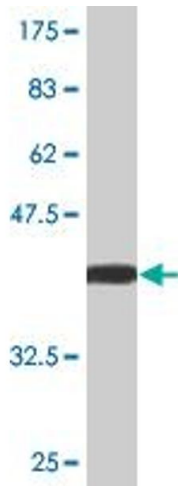
Image 1. LATS1 monoclonal antibody (M09), clone 3A7.

Western Blot analysis of LATS1 expression in HeLa



ELISA

Image 2. Detection limit for recombinant GST tagged LATS1 is approximately 10ng/ml as a capture antibody.



Western Blotting

Image 3. Western Blot detection against Immunogen (36.63 kDa).