



[Go to Product page](#)

Datasheet for ABIN522591

anti-Cyclin E2 antibody (AA 1-404)

2 Images

Overview

Quantity:	100 µg
Target:	Cyclin E2 (CCNE2)
Binding Specificity:	AA 1-404
Reactivity:	Human
Host:	Rabbit
Clonality:	Polyclonal
Conjugate:	This Cyclin E2 antibody is un-conjugated
Application:	Western Blotting (WB)

Product Details

Purpose:	Rabbit polyclonal antibody raised against a full-length human CCNE2 protein.
Immunogen:	CCNE2 (NP_477097.1, 1 a.a. ~ 404 a.a) full-length human protein.
Sequence:	MSRRSSRLQA KQPQPSQTE SPQEAQIIQA KKRKTTQDVK KRREEVTKKH QYEIRNCWPP VLSGGISPCI IIETPHKEIG TSDFSRFTNY RFKNLFINPS PLPDLSWGCS KEVWLNMLKK ESRYVHDKHF EVLHSDLEPQ MRSILLDWLL EVCEVYTLHR ETFYLAQDFF DRFMLTQKDI NKNMLQLIGI TSLFIASKLE EYAPKLQEF AYVTDGACSE EDILRMELII LKALKWELCP VTIISWLNLF LQVDALKDAP KVLPPQYSQE TFIQIAQLLD LCILAIDSLE FQYRILTAAL LCHFTSIEVV KKASGLEWDS ISECVDWMVP FVNVVKSTSP VKLKTFFKIP MEDRHNIQTH TNYLAMLEEV NYINTFRKGG QLSPVCNGGI MTPPKSTKPK PGKH
Cross-Reactivity:	Human, Mouse
Characteristics:	Antibody reactive against mammalian transfected lysate.

Target Details

Target: Cyclin E2 (CCNE2)

Alternative Name: CCNE2 ([CCNE2 Products](#))

Background: Full Gene Name: cyclin E2
Synonyms: CYCE2

Gene ID: 9134

NCBI Accession: [NM_057749](#)

Pathways: [Cell Division Cycle, Mitotic G1-G1/S Phases](#)

Application Details

Application Notes: Optimal working dilution should be determined by the investigator.

Restrictions: For Research Use only

Handling

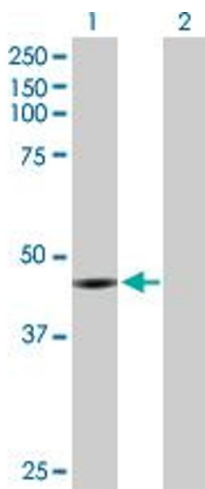
Buffer: In 1x PBS, pH 7.4

Handling Advice: Aliquot to avoid repeated freezing and thawing.

Storage: -20 °C

Storage Comment: Store at -20°C or lower. Aliquot to avoid repeated freezing and thawing.

Images

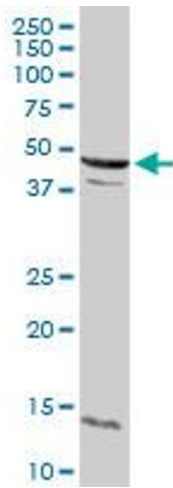


Western Blotting

Image 1. Western Blot analysis of CCNE2 expression in transfected 293T cell line by CCNE2 MaxPab polyclonal antibody.

Lane 1: CCNE2 transfected lysate(46.80 kDa).

Lane 2: Non-transfected lysate.



Western Blotting

Image 2. CCNE2 MaxPab rabbit polyclonal antibody.
Western Blot analysis of CCNE2 expression in mouse liver.