

Datasheet for ABIN522615  
**anti-SLC6A5 antibody (AA 294-393)**[Go to Product page](#)

## 1 Image

## Overview

Quantity:	100 µg
Target:	SLC6A5
Binding Specificity:	AA 294-393
Reactivity:	Human
Host:	Mouse
Clonality:	Monoclonal
Conjugate:	This SLC6A5 antibody is un-conjugated
Application:	Western Blotting (WB), ELISA

## Product Details

Purpose:	Mouse monoclonal antibody raised against a partial recombinant SLC6A5.
Immunogen:	SLC6A5 (NP_004202, 294 a.a. ~ 393 a.a) partial recombinant protein with GST tag. MW of the GST tag alone is 26 KDa.
Sequence:	TLFYLFASFV SVLPWGSCNN PWNTPECKDK TKLLLDSCVI SDHPKIQIKN STFCMTAYPN VTMVNFTSQA NKTFVSGSEE YFKYFVLKIS AGIEYPGEIR
Clone:	3B3
Isotype:	IgG1
Cross-Reactivity:	Human
Characteristics:	Antibody Reactive Against Recombinant Protein.

## Target Details

Target:	SLC6A5
Alternative Name:	SLC6A5 ( <a href="#">SLC6A5 Products</a> )
Background:	Full Gene Name: solute carrier family 6 (neurotransmitter transporter, glycine), member 5 Synonyms: GLYT2,NET1
Gene ID:	9152
NCBI Accession:	<a href="#">NM_004211</a>

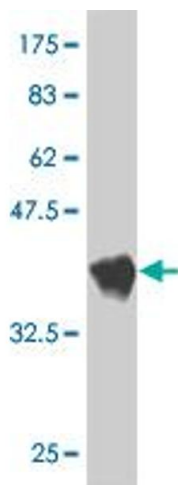
## Application Details

Application Notes:	Optimal working dilution should be determined by the investigator.
Restrictions:	For Research Use only

## Handling

Buffer:	In 1x PBS, pH 7.4
Handling Advice:	Aliquot to avoid repeated freezing and thawing.
Storage:	-20 °C
Storage Comment:	Store at -20°C or lower. Aliquot to avoid repeated freezing and thawing.

## Images



### Western Blotting

**Image 1.** Western Blot detection against Immunogen (36.74 KDa) .