



[Go to Product page](#)

Datasheet for ABIN522616
anti-SLC28A2 antibody (AA 1-79)

2 Images

Overview

Quantity:	100 µg
Target:	SLC28A2
Binding Specificity:	AA 1-79
Reactivity:	Human
Host:	Mouse
Clonality:	Monoclonal
Conjugate:	This SLC28A2 antibody is un-conjugated
Application:	Western Blotting (WB), ELISA

Product Details

Purpose:	Mouse monoclonal antibody raised against a partial recombinant SLC28A2.
Immunogen:	SLC28A2 (NP_004203.1, 1 a.a. ~ 79 a.a) partial recombinant protein with GST tag. MW of the GST tag alone is 26 KDa.
Sequence:	MEKASGRQSI ALSTVETGTV NLGLELMEKE VEPEGSKRTD AQGHSLGDGL GPSTYQRRSR WPFSKARSFC KTHARLFKK
Clone:	2D3
Isotype:	IgG2a
Cross-Reactivity:	Human
Characteristics:	Antibody Reactive Against Recombinant Protein.

Target Details

Target:	SLC28A2
Alternative Name:	SLC28A2 (SLC28A2 Products)
Background:	Full Gene Name: solute carrier family 28 (sodium-coupled nucleoside transporter), member 2 Synonyms: CNT2,HCNT2,HsT17153,MGC138252,SPNT1
Gene ID:	9153
NCBI Accession:	NM_004212

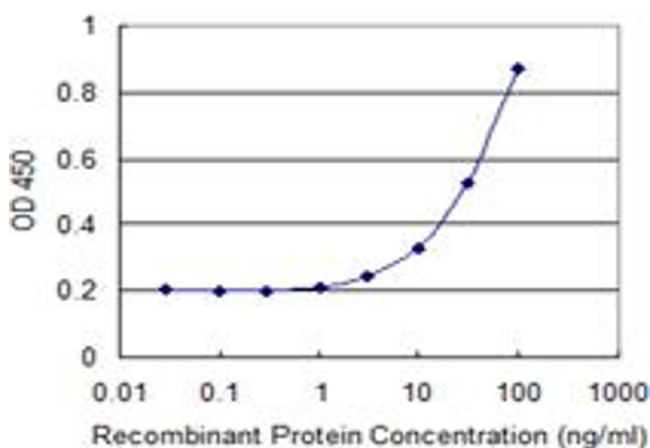
Application Details

Application Notes:	Optimal working dilution should be determined by the investigator.
Restrictions:	For Research Use only

Handling

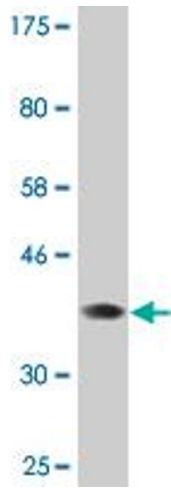
Buffer:	In 1x PBS, pH 7.4
Handling Advice:	Aliquot to avoid repeated freezing and thawing.
Storage:	-20 °C
Storage Comment:	Store at -20°C or lower. Aliquot to avoid repeated freezing and thawing.

Images



ELISA

Image 1. Detection limit for recombinant GST tagged SLC28A2 is 1 ng/ml as a capture antibody.



Western Blotting

Image 2. Western Blot detection against Immunogen (34.43 KDa).