



[Go to Product page](#)

Datasheet for ABIN522658

anti-LRRFIP2 antibody (AA 1-400)

1 Image

Overview

Quantity:	50 µg
Target:	LRRFIP2
Binding Specificity:	AA 1-400
Reactivity:	Human
Host:	Mouse
Clonality:	Polyclonal
Conjugate:	This LRRFIP2 antibody is un-conjugated
Application:	Western Blotting (WB)

Product Details

Purpose:	Mouse polyclonal antibody raised against a full-length human LRRFIP2 protein.
Immunogen:	LRRFIP2 (NP_060194.1, 1 a.a. ~ 400 a.a) full-length human protein.
Sequence:	MGTPASGRKR TPVKDRFSAE DEALSNIARE AEARLAAKRA ARAEARDIRM RELERQQKEL DEKSDKQYAE NYTRPSSRNS ASATTPLSGN SSRRGSGDTS SLIDPDTLSL ELRESLSEVE EKYKKAMVSN AQLDNEKNNL IYQVDTLKDV IEEQEEQMAE FYRENEEKSK ELERQKHMCS VLQHKMEELK EGLRQRDELI EKHGLVIIPD GTPNGDVSHE PVAGAITVVS QEAAQVLESA GEGPLDVRLR KLAGEKEELL SQIRKCLKLQL EEERQKCSRN DGTVGDLAQL QNGSDLQFIE MQRDANRQIS EYKFKLSKAE QDITTLEQSI SRLEGQVRLRY KTAENAIEKV EDELKAEKPK LQRELRTALD KIEEMEMTNS HLAKRLEKMK ANRTALLAQQ
Cross-Reactivity:	Human
Characteristics:	Antibody reactive against mammalian transfected lysate.

Target Details

Target:	LRRFIP2
Alternative Name:	LRRFIP2 (LRRFIP2 Products)
Background:	Full Gene Name: leucine rich repeat (in FLII) interacting protein 2 Synonyms: DKFZp434H2035,FLJ20248,FLJ22683,FLJ58304,HUFI-2
Gene ID:	9209
NCBI Accession:	NM_017724

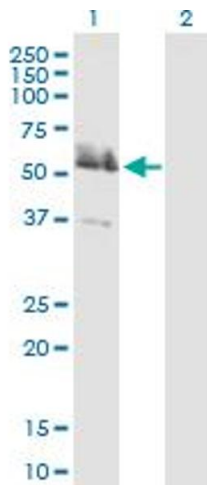
Application Details

Application Notes:	Optimal working dilution should be determined by the investigator.
Restrictions:	For Research Use only

Handling

Buffer:	In 1x PBS, pH 7.4
Handling Advice:	Aliquot to avoid repeated freezing and thawing.
Storage:	-20 °C
Storage Comment:	Store at -20°C or lower. Aliquot to avoid repeated freezing and thawing.

Images



Western Blotting

Image 1. Western Blot analysis of LRRFIP2 expression in transfected 293T cell line by LRRFIP2 MaxPab polyclonal antibody.

Lane 1: LRRFIP2 transfected lysate(44 kDa).

Lane 2: Non-transfected lysate.