



## Datasheet for ABIN522659 anti-LGI1 antibody (AA 1-557)



[Go to Product page](#)

### 1 Image

#### Overview

|                      |                                     |
|----------------------|-------------------------------------|
| Quantity:            | 50 µg                               |
| Target:              | LGI1                                |
| Binding Specificity: | AA 1-557                            |
| Reactivity:          | Human                               |
| Host:                | Mouse                               |
| Clonality:           | Polyclonal                          |
| Conjugate:           | This LGI1 antibody is un-conjugated |
| Application:         | Western Blotting (WB)               |

#### Product Details

|            |  |
|------------|--|
| Purpose:   | Mouse polyclonal antibody raised against a full-length human LGI1 protein.   |
| Immunogen: | LGI1 (NP_005088.1, 1 a.a. ~ 557 a.a) full-length human protein.  |
| Sequence:  | MESERSKRMG NACIPLKRIA YFLCLLSALL LTEGKPKAP KCPAVCTCTK DNALCENARS<br>IPRTVPPDVI SLSFVRSFGFT EISEGSFLFT PSLQLLLFTS NSFDVISDDA FIGLPHLEYL FIENNNIKSI<br>SRHTFRGLKS LIHLSLANNN LQTLPKDIFK GLDSL TNVDL RGNSFNCDCK LKWLVEWLGH<br>TNATVEDIYC EGPPEYKRRK INSLSSKDFD CIITEFAKSQ DLPYQSLSID TFSYLNDEYV<br>VIAQPFTGKC IFLEWDHVEK TFRNYDNITG TSTVVCKPIV IETQLYVIVA QLFGGSHIYK<br>RDSFANKFIK IQDIEILKIR KPNDIETFKI ENNWFVWAD SSKAGFTTIY KWNGNGFYSH<br>QSLHAWYRDT DVEYLEIVRT PQTLRTPHLI LSSSSQRPVI YQWNKATQLF TNQTDIPNME<br>DVYAVKHFSV KGDVYICLTR FIGDSKVMKW GGSSFQDIQR MPSRGSVMVFQ PLQINNYQYA<br>ILGSDYSFTQ VYNWDAEKAK FVKFQELNVQ APRSFTHVSI NKRNFLFASS FKGNTQIYKH<br>VIVDLSA |

## Product Details

---

|                   |   |
|-------------------|---|
| Cross-Reactivity: | Human   |
| Characteristics:  | Antibody reactive against mammalian transfected lysate. |

## Target Details

---

|                   |   |
|-------------------|---|
| Target:           | LGI1  |
| Alternative Name: | LGI1 ( <a href="#">LGI1 Products</a> )  |
| Background:       | Full Gene Name: leucine-rich, glioma inactivated 1<br>Synonyms: EPITEMPIN,EPT,ETL1,IB1099 |
| Gene ID:          | 9211  |
| NCBI Accession:   | <a href="#">NM_005097</a>   |

## Application Details

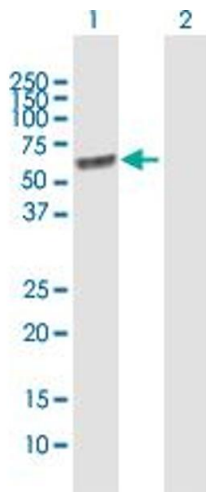
---

|                    |  |
|--------------------|--|
| Application Notes: | Optimal working dilution should be determined by the investigator. |
| Restrictions:      | For Research Use only  |

## Handling

---

|                  |  |
|------------------|--|
| Buffer:          | In 1x PBS, pH 7.4  |
| Handling Advice: | Aliquot to avoid repeated freezing and thawing.                          |
| Storage:         | -20 °C   |
| Storage Comment: | Store at -20°C or lower. Aliquot to avoid repeated freezing and thawing. |



### Western Blotting

**Image 1.** Western Blot analysis of LGI1 expression in transfected 293T cell line by LGI1 MaxPab polyclonal antibody.

Lane 1: LGI1 transfected lysate(61.27 KDa).

Lane 2: Non-transfected lysate.