



[Go to Product page](#)

Datasheet for ABIN522698
anti-IL32 antibody (AA 1-188)

4 Images

Overview

Quantity:	100 µL
Target:	IL32
Binding Specificity:	AA 1-188
Reactivity:	Human
Host:	Rabbit
Clonality:	Polyclonal
Conjugate:	This IL32 antibody is un-conjugated
Application:	Western Blotting (WB), Immunoprecipitation (IP)

Product Details

Purpose:	Rabbit polyclonal antibody raised against a full-length human IL32 protein.
Immunogen:	IL32 (NP_001012649.1, 1 a.a. ~ 188 a.a) full-length human protein.
Sequence:	MCFPKVLSDD MKKLLKARMHQ AIERFYDKMQ NAESGRGQVM SSLAELEDDF KEGYLETVAA YYEEQHPELT PLLEKERDGL RCRGNRSPVP DVEDPATEEP GESFCDKVMR WFQAMLRLQ TWWHGVLAWV KEKVVALVHA VQALWKQFQS FCCSLSELFM SSFQSYGAPR GDKEELTPQK CSEPPQSSK
Cross-Reactivity:	Human, Mouse
Characteristics:	Antibody reactive against mammalian transfected lysate.

Target Details

Target:	IL32
---------	------

Target Details

Alternative Name:	IL32 (IL32 Products)
Background:	Full Gene Name: interleukin 32 Synonyms: IL-32alpha,IL-32beta,IL-32delta,IL-32gamma,NK4,TAIF,TAIFa,TAIFb,TAIFc,TAIFd
Gene ID:	9235
NCBI Accession:	NM_001012631

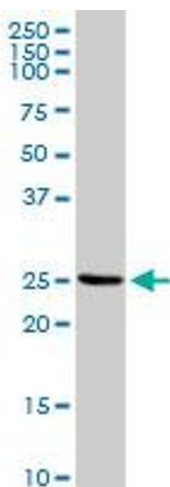
Application Details

Application Notes:	Optimal working dilution should be determined by the investigator.
Restrictions:	For Research Use only

Handling

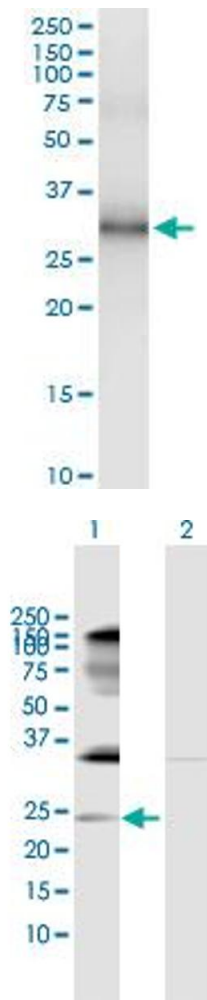
Format:	Liquid
Buffer:	No additive
Preservative:	Without preservative
Handling Advice:	Aliquot to avoid repeated freezing and thawing.
Storage:	-20 °C
Storage Comment:	Store at -20°C or lower. Aliquot to avoid repeated freezing and thawing.

Images



Western Blotting

Image 1. IL32 MaxPab rabbit polyclonal antibody. Western Blot analysis of IL32 expression in human spleen.



Immunoprecipitation

Image 2. Immunoprecipitation of IL32 transfected lysate using anti-IL32 MaxPab rabbit polyclonal antibody and Protein A Magnetic Bead , and immunoblotted with IL32 MaxPab mouse polyclonal antibody (B01) .

Western Blotting

Image 3. Western Blot analysis of IL32 expression in transfected 293T cell line by IL32 MaxPab polyclonal antibody.

Lane 1: IL32 transfected lysate(21.7 KDa).

Lane 2: Non-transfected lysate.

Please check the [product details page](#) for more images. Overall 4 images are available for ABIN522698.