



[Go to Product page](#)

Datasheet for ABIN522753

anti-Cytohesin 2 antibody (AA 314-398)

1 Image

Overview

Quantity:	100 µg
Target:	Cytohesin 2 (CYTH2)
Binding Specificity:	AA 314-398
Reactivity:	Human
Host:	Mouse
Clonality:	Monoclonal
Conjugate:	This Cytohesin 2 antibody is un-conjugated
Application:	Western Blotting (WB), ELISA

Product Details

Purpose:	Mouse monoclonal antibody raised against a partial recombinant CYTH2.
Immunogen:	CYTH2 (NP_059431, 314 a.a. ~ 398 a.a) partial recombinant protein with GST tag. MW of the GST tag alone is 26 KDa.
Sequence:	VDDPRKPNCF ELYIPNKGQ LIKACKTEAD GRVVEGNHMV YRISAPTQEE KDEWIKSIQA AVSVDPFYEM LAARKKRISV KKKQE
Clone:	5E11
Isotype:	IgG2b
Cross-Reactivity:	Human
Characteristics:	Antibody Reactive Against Recombinant Protein.

Target Details

Target:	Cytohesin 2 (CYTH2)
Alternative Name:	CYTH2 (CYTH2 Products)
Background:	Full Gene Name: cytohesin 2 Synonyms: ARNO,CTS18,CTS18.1,PSCD2,PSCD2L,SEC7L,Sec7p-L,Sec7p-like
Gene ID:	9266
NCBI Accession:	NM_017457

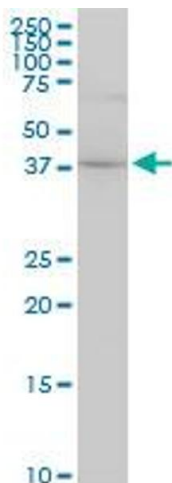
Application Details

Application Notes:	Optimal working dilution should be determined by the investigator.
Restrictions:	For Research Use only

Handling

Buffer:	In 1x PBS, pH 7.4
Handling Advice:	Aliquot to avoid repeated freezing and thawing.
Storage:	-20 °C
Storage Comment:	Store at -20°C or lower. Aliquot to avoid repeated freezing and thawing.

Images



Western Blotting

Image 1. CYTH2 monoclonal antibody (M01), clone 5E11.
Western Blot analysis of CYTH2 expression in A-431.