



[Go to Product page](#)

Datasheet for ABIN522761
anti-BCL7C antibody (AA 86-164)

2 Images

Overview

Quantity:	100 µg
Target:	BCL7C
Binding Specificity:	AA 86-164
Reactivity:	Human
Host:	Mouse
Clonality:	Monoclonal
Conjugate:	This BCL7C antibody is un-conjugated
Application:	Western Blotting (WB), ELISA, Immunofluorescence (IF)

Product Details

Purpose:	Mouse monoclonal antibody raised against a partial recombinant BCL7C.
Immunogen:	BCL7C (NP_004756, 86 a.a. ~ 164 a.a) partial recombinant protein with GST tag. MW of the GST tag alone is 26 KDa.
Sequence:	PLILLDLNDE NSNQSFHSEG SLQKGTEPSP GGTPQPSRPV SPAGPPEGVP EEAQPRLGQ ERDPGGITAG STDEPPMLT
Clone:	1A4
Isotype:	IgG2b
Cross-Reactivity:	Human
Characteristics:	Antibody Reactive Against Recombinant Protein.

Target Details

Target:	BCL7C
Alternative Name:	BCL7C (BCL7C Products)
Background:	Full Gene Name: B-cell CLL/lymphoma 7C Synonyms:
Gene ID:	9274
NCBI Accession:	NM_004765

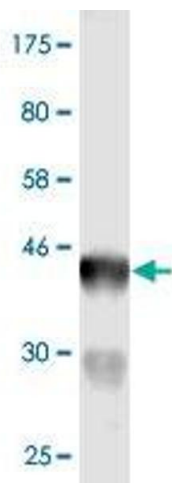
Application Details

Application Notes:	Optimal working dilution should be determined by the investigator.
Restrictions:	For Research Use only

Handling

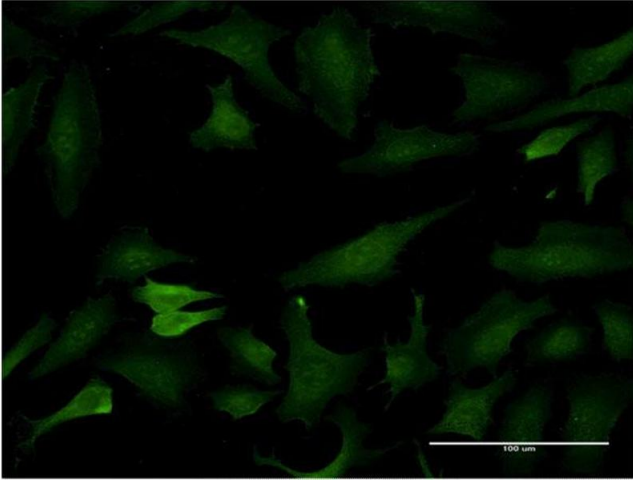
Buffer:	In 1x PBS, pH 7.4
Handling Advice:	Aliquot to avoid repeated freezing and thawing.
Storage:	-20 °C
Storage Comment:	Store at -20°C or lower. Aliquot to avoid repeated freezing and thawing.

Images



Western Blotting

Image 1. Western Blot detection against Immunogen (34.43 KDa) .



Immunofluorescence

Image 2. Immunofluorescence of monoclonal antibody to BCL7C on HeLa cell. [antibody concentration 10 ug/ml]