



[Go to Product page](#)

Datasheet for ABIN522794  
**anti-TCEAL1 antibody (AA 1-159)**

2 Images

Overview

Quantity:	100 µL
Target:	TCEAL1
Binding Specificity:	AA 1-159
Reactivity:	Human
Host:	Rabbit
Clonality:	Polyclonal
Conjugate:	This TCEAL1 antibody is un-conjugated
Application:	Western Blotting (WB), Immunoprecipitation (IP)

Product Details

Purpose:	Rabbit polyclonal antibody raised against a full-length human TCEAL1 protein.
Immunogen:	TCEAL1 (NP_001006640.1, 1 a.a. ~ 159 a.a) full-length human protein.
Sequence:	MDKPRKENEE EPQSAPKTDE ERPPVEHSPE KQSPEEQSSE EQSSEEEFFP EELLPELLPE MLLSEERPPQ EGLSRKDLFE GRPPMEQPPC GVGKHKLEEG SFKERLARSR PQFRGDIHGR NLSNEEMIQA ADELEEMKRV RNKLMIMHWK AKRSRPYPI
Cross-Reactivity:	Human
Characteristics:	Antibody reactive against mammalian transfected lysate.

Target Details

Target:	TCEAL1
---------	--------

## Target Details

Alternative Name:	TCEAL1 ( <a href="#">TCEAL1 Products</a> )
Background:	Full Gene Name: transcription elongation factor A (SII)-like 1 Synonyms: SIIR,p21,pp21
Gene ID:	9338
NCBI Accession:	<a href="#">NM_001006639</a>

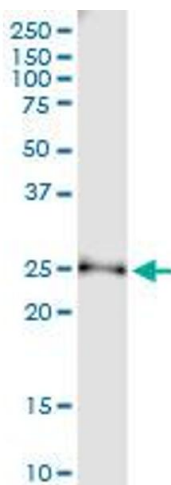
## Application Details

Application Notes:	Optimal working dilution should be determined by the investigator.
Restrictions:	For Research Use only

## Handling

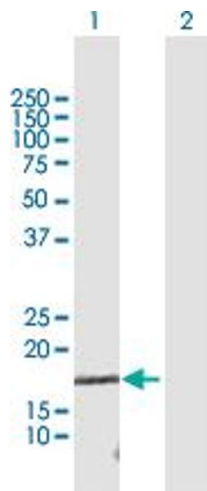
Format:	Liquid
Buffer:	No additive
Preservative:	Without preservative
Handling Advice:	Aliquot to avoid repeated freezing and thawing.
Storage:	-20 °C
Storage Comment:	Store at -20°C or lower. Aliquot to avoid repeated freezing and thawing.

## Images



### Immunoprecipitation

**Image 1.** Immunoprecipitation of TCEAL1 transfected lysate using anti-TCEAL1 MaxPab rabbit polyclonal antibody and Protein A Magnetic Bead , and immunoblotted with TCEAL1 purified MaxPab mouse polyclonal antibody (B01P) .



### Western Blotting

**Image 2.** Western Blot analysis of TCEAL1 expression in transfected 293T cell line by TCEAL1 MaxPab polyclonal antibody.

Lane 1: TCEAL1 transfected lysate(18.6 KDa).

Lane 2: Non-transfected lysate.