



[Go to Product page](#)

Datasheet for ABIN522831
anti-SLC9A3R1 antibody (AA 252-358)

4 Images

Overview

Quantity:	100 µg
Target:	SLC9A3R1
Binding Specificity:	AA 252-358
Reactivity:	Human
Host:	Mouse
Clonality:	Monoclonal
Conjugate:	This SLC9A3R1 antibody is un-conjugated
Application:	Western Blotting (WB), ELISA, Immunohistochemistry (Paraffin-embedded Sections) (IHC (p)), Proximity Ligation Assay (PLA)

Product Details

Purpose:	Mouse monoclonal antibody raised against a partial recombinant SLC9A3R1.
Immunogen:	SLC9A3R1 (NP_004243.1, 252 a.a. ~ 358 a.a) partial recombinant protein with GST tag. MW of the GST tag alone is 26 KDa.
Sequence:	NGPLPVPFTN GEIQKENSRE ALAEAALESP RPALVRSASS DTSEELNSQD SPPKQDSTAP SSTSSSDPIL DFNISLAMAK ERAHQKRSSK RAPQMDWSKK NELFSNL
Clone:	2B7
Isotype:	IgG2a
Cross-Reactivity:	Human
Characteristics:	Antibody Reactive Against Recombinant Protein.

Target Details

Target:	SLC9A3R1
Alternative Name:	SLC9A3R1 (SLC9A3R1 Products)
Background:	Full Gene Name: solute carrier family 9 (sodium/hydrogen exchanger), member 3 regulator 1 Synonyms: EBP50,NHERF,NHERF1,NPHLOP2
Gene ID:	9368
NCBI Accession:	NM_004252
Pathways:	Proton Transport , Platelet-derived growth Factor Receptor Signaling , Negative Regulation of Transporter Activity , SARS-CoV-2 Protein Interactome

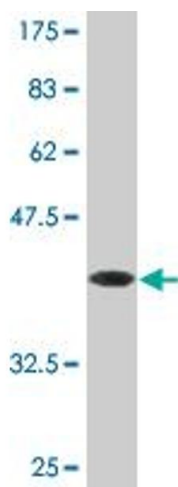
Application Details

Application Notes:	Optimal working dilution should be determined by the investigator.
Restrictions:	For Research Use only

Handling

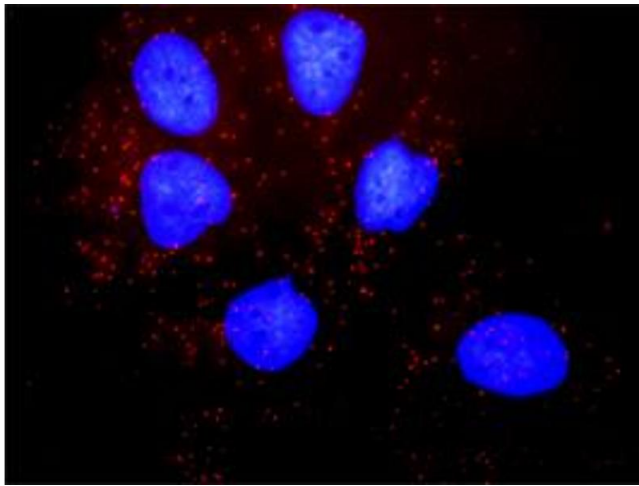
Buffer:	In 1x PBS, pH 7.4
Handling Advice:	Aliquot to avoid repeated freezing and thawing.
Storage:	-20 °C
Storage Comment:	Store at -20°C or lower. Aliquot to avoid repeated freezing and thawing.

Images



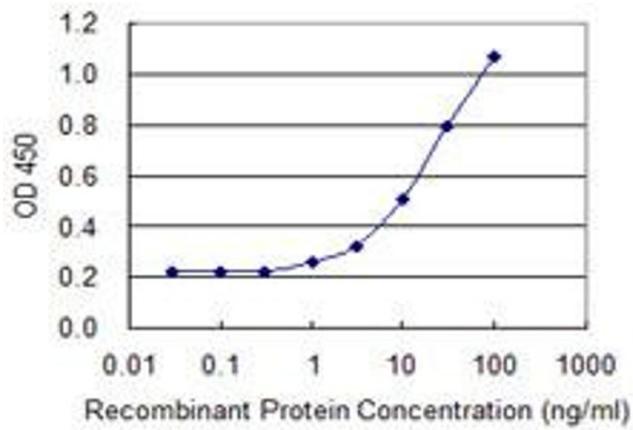
Western Blotting

Image 1. Western Blot detection against Immunogen (37.51 KDa) .



Proximity Ligation Assay

Image 2. Proximity Ligation Analysis of protein-protein interactions between PDGFRB and SLC9A3R1. Huh7 cells were stained with anti-PDGFRB rabbit purified polyclonal 1:1200 and anti-SLC9A3R1 mouse monoclonal antibody 1:50. Each red dot represents the detection of protein-protein interaction complex, and nuclei were counterstained with DAPI (blue).



ELISA

Image 3. Detection limit for recombinant GST tagged SLC9A3R1 is 0.3 ng/ml as a capture antibody.

Please check the [product details page](#) for more images. Overall 4 images are available for ABIN522831.