



Datasheet for ABIN522833
anti-PLAA antibody (AA 639-738)



[Go to Product page](#)

2 Images

Overview

Quantity:	100 µg
Target:	PLAA
Binding Specificity:	AA 639-738
Reactivity:	Human
Host:	Mouse
Clonality:	Monoclonal
Conjugate:	This PLAA antibody is un-conjugated
Application:	Western Blotting (WB), ELISA

Product Details

Purpose:	Mouse monoclonal antibody raised against a partial recombinant PLAA.
Immunogen:	PLAA (NP_004244, 639 a.a. ~ 738 a.a) partial recombinant protein with GST tag. MW of the GST tag alone is 26 KDa.
Sequence:	KNIHIALATL ALNYSVCFHK DHNIEGKAQC LSLISTILEV VQDLEATFRL LVALGTLISD DSNAVQLAKS LGVDSQIKKY SSVSEPAKVS ECCRFILNLL
Clone:	2C1
Isotype:	IgG2b
Cross-Reactivity:	Human
Characteristics:	Antibody Reactive Against Recombinant Protein.

Target Details

Target:	PLAA
Alternative Name:	PLAA (PLAA Products)
Background:	Full Gene Name: phospholipase A2-activating protein Synonyms: DOA1,FLJ11281,FLJ12699,PLA2P,PLAP
Gene ID:	9373
NCBI Accession:	NM_004253

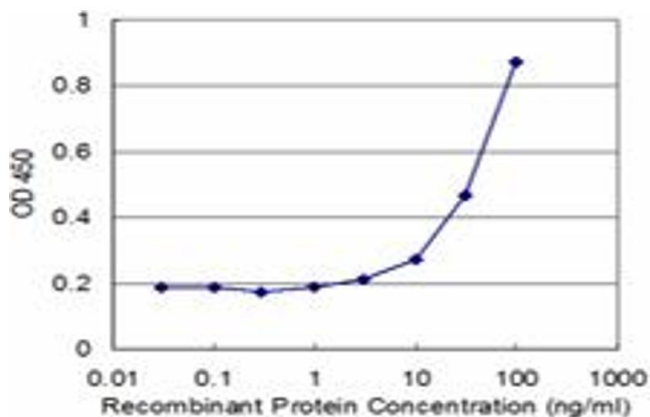
Application Details

Application Notes:	Optimal working dilution should be determined by the investigator.
Restrictions:	For Research Use only

Handling

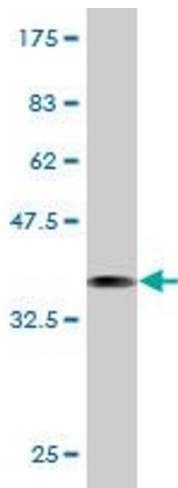
Buffer:	In 1x PBS, pH 7.4
Handling Advice:	Aliquot to avoid repeated freezing and thawing.
Storage:	-20 °C
Storage Comment:	Store at -20°C or lower. Aliquot to avoid repeated freezing and thawing.

Images



ELISA

Image 1. Detection limit for recombinant GST tagged PLAA is approximately 3ng/ml as a capture antibody.



Western Blotting

Image 2. Western Blot detection against Immunogen (36.74 kDa).