

Datasheet for ABIN522838  
**anti-SLC22A8 antibody (AA 256-325)**[Go to Product page](#)

## 2 Images

## Overview

Quantity:	100 µg
Target:	SLC22A8
Binding Specificity:	AA 256-325
Reactivity:	Human
Host:	Mouse
Clonality:	Monoclonal
Conjugate:	This SLC22A8 antibody is un-conjugated
Application:	Western Blotting (WB), ELISA

## Product Details

Purpose:	Mouse monoclonal antibody raised against a partial recombinant SLC22A8.
Immunogen:	SLC22A8 (NP_004245.2, 256 a.a. ~ 325 a.a) partial recombinant protein with GST tag. MW of the GST tag alone is 26 KDa.
Sequence:	TPESIRWLVL SGKSSKALKI LRRVAVFNGK KEEGERLSLE ELKLNQKEI SLAKAKYTAS DLFRIPMLRR
Clone:	3C11
Isotype:	IgG2b
Cross-Reactivity:	Human, Rat
Characteristics:	Antibody Reactive Against Recombinant Protein.

### Target Details

Target:	SLC22A8
Alternative Name:	SLC22A8 ( <a href="#">SLC22A8 Products</a> )
Background:	Full Gene Name: solute carrier family 22 (organic anion transporter), member 8 Synonyms: MGC24086,OAT3
Gene ID:	9376
NCBI Accession:	<a href="#">NM_004254</a>

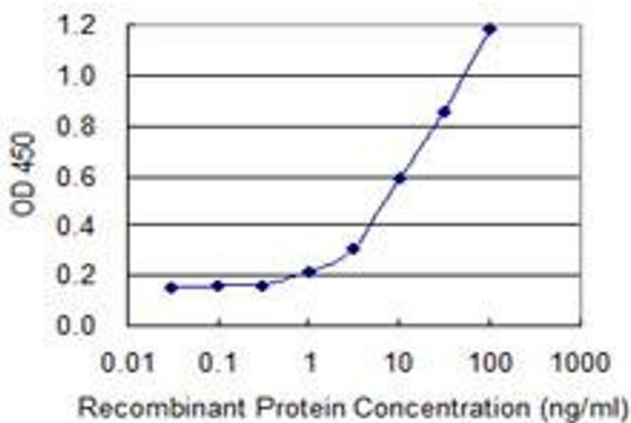
### Application Details

Application Notes:	Optimal working dilution should be determined by the investigator.
Restrictions:	For Research Use only

### Handling

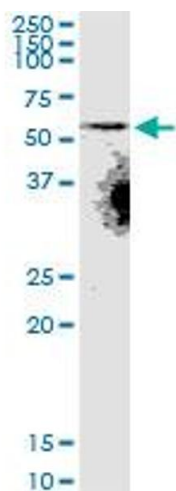
Buffer:	In 1x PBS, pH 7.4
Handling Advice:	Aliquot to avoid repeated freezing and thawing.
Storage:	-20 °C
Storage Comment:	Store at -20°C or lower. Aliquot to avoid repeated freezing and thawing.

### Images



**ELISA**

**Image 1.** Detection limit for recombinant GST tagged SLC22A8 is 0.3 ng/ml as a capture antibody.



### Western Blotting

**Image 2.** SLC22A8 monoclonal antibody (M02), clone 3C11.  
Western Blot analysis of SLC22A8 expression in rat muscle.