

Datasheet for ABIN522846
anti-LIPG antibody (AA 1-500)



[Go to Product page](#)

1 Image

Overview

| | |
|----------------------|-------------------------------------|
| Quantity: | 50 µg |
| Target: | LIPG |
| Binding Specificity: | AA 1-500 |
| Reactivity: | Human |
| Host: | Mouse |
| Clonality: | Polyclonal |
| Conjugate: | This LIPG antibody is un-conjugated |
| Application: | Western Blotting (WB) |

Product Details

| | |
|------------|---|
| Purpose: | Mouse polyclonal antibody raised against a full-length human LIPG protein. |
| Immunogen: | LIPG (AAH60825.1, 1 a.a. ~ 500 a.a) full-length human protein. |
| Sequence: | MSNSVPLLCF WSLCYCFAAG SPVPFGPEGR LEDKLHKPKA TQTEVKPSVR FNLRTSKDPE HEGCYLSVGH SQPLEDCSFN MTAKTFFIIH GWTMSGIFEN WLHKLVSALH TREKDANVVV VDWLPLAHQL YTDAVNTRV VGHSIARMLD WLQEKDDFSL GNVHLIGYSL GAHVAGYAGN FVKGTVGRIT GLDPAGPMFE GADIAHKRLSP DDADFVDVLH TYTRSFGLSI GIQMPVGHID IYPNGGDFQP GCGLNDVLGS IAYGTITEVV KCEHERAVHL FVDSLQNQDK PSFAFQCTDS NRFKKGICLS CRKNRCNSIG YNAKKMRNKR NSKMYLKTRA GMPFRVYHYQ MKIHVFSYKN MGEIEPTFYV TLYGTNADSQ TLPLEIVERI EQNATNTFLV YTEEDLGDLL KIQLTWEGAS QSWYNLWKEF RSYLSQPRNP GRELNIRRIK VKSGETQRKL TFCTEDPENT SISPGQELWF RKCRDGWRMK NETSPTVELP |

Product Details

| | |
|-------------------|---|
| Cross-Reactivity: | Human |
| Characteristics: | Antibody reactive against mammalian transfected lysate. |

Target Details

| | |
|-------------------|--|
| Target: | LIPG |
| Alternative Name: | LIPG (LIPG Products) |
| Background: | Full Gene Name: lipase, endothelial Synonyms: EDL,EL,PRO719 |
| Gene ID: | 9388 |

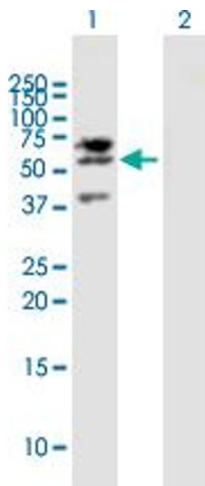
Application Details

| | |
|--------------------|--|
| Application Notes: | Optimal working dilution should be determined by the investigator. |
| Restrictions: | For Research Use only |

Handling

| | |
|------------------|--|
| Buffer: | In 1x PBS, pH 7.4 |
| Handling Advice: | Aliquot to avoid repeated freezing and thawing. |
| Storage: | -20 °C |
| Storage Comment: | Store at -20°C or lower. Aliquot to avoid repeated freezing and thawing. |

Images



Western Blotting

Image 1. Western Blot analysis of LIPG expression in transfected 293T cell line by LIPG MaxPab polyclonal antibody.

Lane 1: LIPG transfected lysate(55 KDa).

Lane 2: Non-transfected lysate.