

Datasheet for ABIN522847
anti-LIPG antibody (AA 1-500)



[Go to Product page](#)

1 Image

Overview

Quantity:	100 µg
Target:	LIPG
Binding Specificity:	AA 1-500
Reactivity:	Human
Host:	Rabbit
Clonality:	Polyclonal
Conjugate:	This LIPG antibody is un-conjugated
Application:	Western Blotting (WB)

Product Details

Purpose:	Rabbit polyclonal antibody raised against a full-length human LIPG protein.
Immunogen:	LIPG (AAH60825.1, 1 a.a. ~ 500 a.a) full-length human protein.
Sequence:	MSNSVPLLCF WSLCYCFAAG SPVPFGPEGR LEDKLHKPKA TQTEVKPSVR FNLRTSKDPE HEGCYLSVGH SQPLEDCSFN MTAKTFFIIH GWTMSGIFEN WLHKLVSALH TREKDANVVV VDWLPLAHQL YTDAVNNTRV VGHSIARMLD WLQEKDDFSL GNVHLIGYSL GAHVAGYAGN FVKGTVGRIT GLDPAGPMFE GADIAHKRLSP DDADFVDVLH TYTRSFGLSI GIQMPVGHID IYPNGGDFQP GCGLNDVLGS IAYGTITEVV KCEHERAVHL FVDSLQNQDK PSFAFQCTDS NRFKKGICLS CRKNRCNSIG YNAKKMRNKR NSKMYLKTRA GMPFRVYHYQ MKIHVFSYKN MGEIEPTFYV TLYGTNADSQ TLPLEIVERI EQNATNTFLV YTEEDLGDLL KIQLTWEGAS QSWYNLWKEF RSYLSQPRNP GRELNIRRIK VKSGETQRKL TFCTEDPENT SISPGQELWF RKCRDGWRMK NETSPTVELP

Product Details

Cross-Reactivity:	Human
Characteristics:	Antibody reactive against mammalian transfected lysate.

Target Details

Target:	LIPG
Alternative Name:	LIPG (LIPG Products)
Background:	Full Gene Name: lipase, endothelial Synonyms: EDL,EL,PRO719
Gene ID:	9388

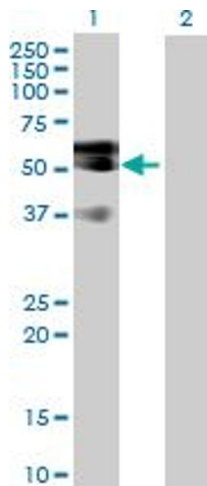
Application Details

Application Notes:	Optimal working dilution should be determined by the investigator.
Restrictions:	For Research Use only

Handling

Buffer:	In 1x PBS, pH 7.4
Handling Advice:	Aliquot to avoid repeated freezing and thawing.
Storage:	-20 °C
Storage Comment:	Store at -20°C or lower. Aliquot to avoid repeated freezing and thawing.

Images



Western Blotting

Image 1. Western Blot analysis of LIPG expression in transfected 293T cell line by LIPG MaxPab polyclonal antibody.

Lane 1: LIPG transfected lysate(56.80 KDa).

Lane 2: Non-transfected lysate.