



[Go to Product page](#)

Datasheet for ABIN522860
anti-GRAP2 antibody (AA 1-330)

3 Images

Overview

Quantity:	100 µL
Target:	GRAP2
Binding Specificity:	AA 1-330
Reactivity:	Human
Host:	Rabbit
Clonality:	Polyclonal
Conjugate:	This GRAP2 antibody is un-conjugated
Application:	Western Blotting (WB), Immunoprecipitation (IP)

Product Details

Purpose:	Rabbit polyclonal antibody raised against a full-length human GRAP2 protein.
Immunogen:	GRAP2 (NP_004801.1, 1 a.a. ~ 330 a.a) full-length human protein.
Sequence:	MEAVAKFDFT ASGEDELSFH TGDVLKILSN QEEWFKAELG SQEGYVPKNF IDIQFPKWFH EGLSRHQAEN LLMGKEVGFF IIRASQSSPG DFSISVRHED DVQHFVKMRD NKGNYFLWTE KFPSLNKLVD YYRTNSISRQ KQIFLRDRTR EDQGHRGNSL DRRSQGGPHL SGAVGEEIRP SMNRKLSDHP PTLPLQQHQH QPQPPQYAPA PQLQPPQ RYLQHFFFHQ ERRGSLDIN DGHCGTGLGS EMNAALMHRH HTDPVQLQAA GRVRWARALY DFEALEDDEL GFHSGEVVEV LDSSNPSWWT GRLHNKLGFL PANYVAPMTR
Cross-Reactivity:	Human
Characteristics:	Antibody reactive against mammalian transfected lysate.

Target Details

Target:	GRAP2
Alternative Name:	GRAP2 (GRAP2 Products)
Background:	Full Gene Name: GRB2-related adaptor protein 2 Synonyms: GADS,GRAP-2,GRB2L,GRBLG,GRID,GRPL,GrbX,Grf40,Mona,P38
Gene ID:	9402
NCBI Accession:	NM_004810
Pathways:	TCR Signaling , Fc-epsilon Receptor Signaling Pathway

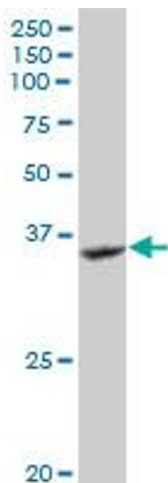
Application Details

Application Notes:	Optimal working dilution should be determined by the investigator.
Restrictions:	For Research Use only

Handling

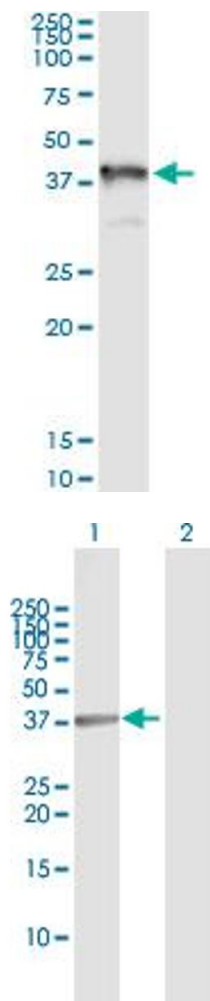
Format:	Liquid
Buffer:	No additive
Preservative:	Without preservative
Handling Advice:	Aliquot to avoid repeated freezing and thawing.
Storage:	-20 °C
Storage Comment:	Store at -20°C or lower. Aliquot to avoid repeated freezing and thawing.

Images



Western Blotting

Image 1. GRAP2 MaxPab rabbit polyclonal antibody.
Western Blot analysis of GRAP2 expression in Jurkat.



Immunoprecipitation

Image 2. Immunoprecipitation of GRAP2 transfected lysate using anti-GRAP2 MaxPab rabbit polyclonal antibody and Protein A Magnetic Bead , and immunoblotted with GRAP2 purified MaxPab mouse polyclonal antibody (B02P) .

Western Blotting

Image 3. Western Blot analysis of GRAP2 expression in transfected 293T cell line by GRAP2 MaxPab polyclonal antibody.

Lane 1: GRAP2 transfected lysate(37.90 kDa).

Lane 2: Non-transfected lysate.