



[Go to Product page](#)

Datasheet for ABIN522865

anti-TMPRSS11D antibody (AA 1-418)

1 Image

Overview

Quantity:	50 µg
Target:	TMPRSS11D
Binding Specificity:	AA 1-418
Reactivity:	Human
Host:	Mouse
Clonality:	Polyclonal
Conjugate:	This TMPRSS11D antibody is un-conjugated
Application:	Western Blotting (WB)

Product Details

Purpose:	Mouse polyclonal antibody raised against a full-length human TMPRSS11D protein.
Immunogen:	TMPRSS11D (NP_004253.1, 1 a.a. ~ 418 a.a) full-length human protein.
Sequence:	MYRPARVTST SRFLNPYVVC FIVVAGVVIL AVTIALLVYF LAFDQKSYFY RSSFQLLNVE YNSQLNSPAT QEYRTLSGRI ESLITKTFKE SNLRNQFIRA HVAKLRQDGS GVRADVVMKF QFTRNNNGAS MKSRIESVLR QMLNNSGNLE INPSTEITSL TDQAAANWLI NECGAGPDLI TLSEQRILGG TEAEEGSPWP QVSLRLNNAH HCGGSLINNM WILTAHCFR SNSNPRDWIA TSGISTTFPK LRMRVRNILI HNNYKSATHE NDIALVRLN SVTFTKDIHS VCLPAATQNI PPGSTAYVTG WGAQEYAGHT VPELRQGQVR IISNDVCNAP HSYNGAILSG MLCAGVPQGG VDACQGDSGG PLVQEDSRRL WFIVGIVSWG DQCGLPDKPG VYTRVTAYLD WIRQQTGI
Cross-Reactivity:	Human
Characteristics:	Antibody reactive against mammalian transfected lysate.

Target Details

Target:	TMPRSS11D
Alternative Name:	TMPRSS11D (TMPRSS11D Products)
Background:	Full Gene Name: transmembrane protease, serine 11D Synonyms: HAT,MGC150587,MGC150588
Gene ID:	9407
NCBI Accession:	NM_004262
Pathways:	Positive Regulation of Peptide Hormone Secretion , Regulation of Carbohydrate Metabolic Process

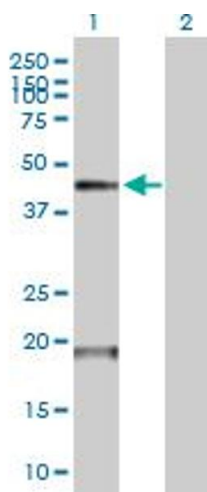
Application Details

Application Notes:	Optimal working dilution should be determined by the investigator.
Restrictions:	For Research Use only

Handling

Buffer:	In 1x PBS, pH 7.4
Handling Advice:	Aliquot to avoid repeated freezing and thawing.
Storage:	-20 °C
Storage Comment:	Store at -20°C or lower. Aliquot to avoid repeated freezing and thawing.

Images



Western Blotting

Image 1. Western Blot analysis of TMPRSS11D expression in transfected 293T cell line by TMPRSS11D MaxPab polyclonal antibody.

Lane 1: TMPRSS11D transfected lysate(45.98 KDa).

Lane 2: Non-transfected lysate.