

Datasheet for ABIN522876
anti-CYP7B1 antibody (AA 203-286)[Go to Product page](#)

4 Images

Overview

Quantity:	100 µg
Target:	CYP7B1
Binding Specificity:	AA 203-286
Reactivity:	Human
Host:	Mouse
Clonality:	Monoclonal
Conjugate:	This CYP7B1 antibody is un-conjugated
Application:	Western Blotting (WB), ELISA, Immunohistochemistry (Paraffin-embedded Sections) (IHC (p))

Product Details

Purpose:	Mouse monoclonal antibody raised against a partial recombinant CYP7B1.
Immunogen:	CYP7B1 (NP_004811, 203 a.a. ~ 286 a.a) partial recombinant protein with GST tag. MW of the GST tag alone is 26 KDa.
Sequence:	CDNNKFISEL RDDFLKFDDK FAYLVSNIPi ELLGNVKSIR EKIIKCFSSSE KLAKMQGWSE VFQSRQDVLE KYVYVHEDLEI GAHH
Clone:	2B11
Isotype:	IgG2a
Cross-Reactivity:	Human
Characteristics:	Antibody Reactive Against Recombinant Protein.

Target Details

Target:	CYP7B1
Alternative Name:	CYP7B1 (CYP7B1 Products)
Background:	Full Gene Name: cytochrome P450, family 7, subfamily B, polypeptide 1 Synonyms: CBAS3,CP7B,SPG5A
Gene ID:	9420
NCBI Accession:	NM_004820
Pathways:	Intracellular Steroid Hormone Receptor Signaling Pathway , Steroid Hormone Biosynthesis , Regulation of Intracellular Steroid Hormone Receptor Signaling

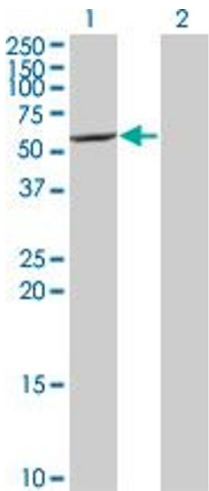
Application Details

Application Notes:	Optimal working dilution should be determined by the investigator.
Restrictions:	For Research Use only

Handling

Buffer:	In 1x PBS, pH 7.4
Handling Advice:	Aliquot to avoid repeated freezing and thawing.
Storage:	-20 °C
Storage Comment:	Store at -20°C or lower. Aliquot to avoid repeated freezing and thawing.

Images



Western Blotting

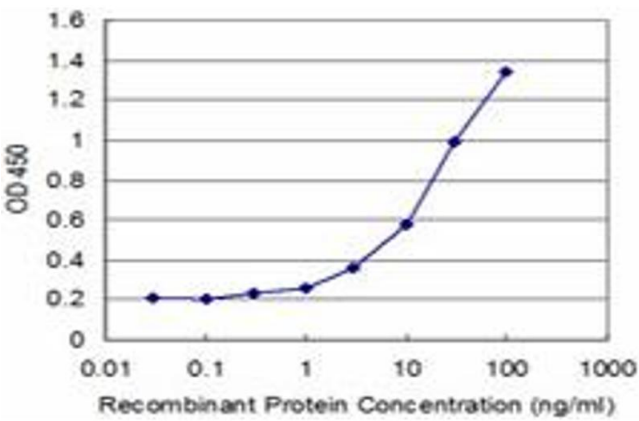
Image 1. Western Blot analysis of CYP7B1 expression in transfected 293T cell line by CYP7B1 monoclonal antibody (M06), clone 2B11.

Lane 1: CYP7B1 transfected lysate(58.256 KDa).

Lane 2: Non-transfected lysate.

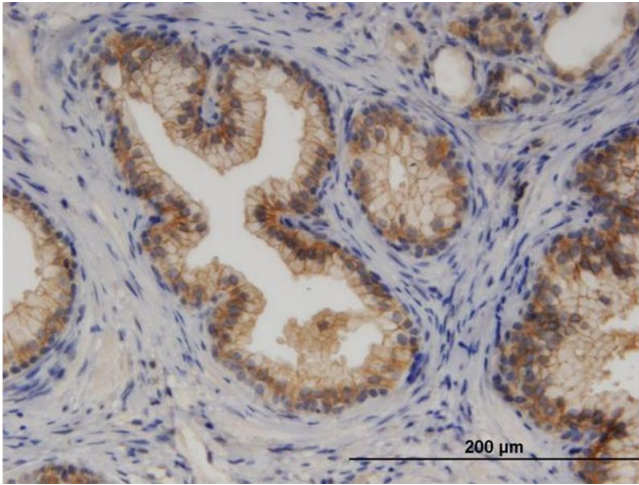
ELISA

Image 2. Detection limit for recombinant GST tagged CYP7B1 is approximately 0.3ng/ml as a capture antibody.



Immunostaining

Image 3. Immunoperoxidase of monoclonal antibody to CYP7B1 on formalin-fixed paraffin-embedded human prostate. [antibody concentration 3 ug/ml]



Please check the [product details page](#) for more images. Overall 4 images are available for ABIN522876.