

Datasheet for ABIN522915  
**anti-HOMER2 antibody (AA 1-343)**



[Go to Product page](#)

5 Images

## Overview

Quantity:	100 µL
Target:	HOMER2
Binding Specificity:	AA 1-343
Reactivity:	Human
Host:	Rabbit
Clonality:	Polyclonal
Conjugate:	This HOMER2 antibody is un-conjugated
Application:	Western Blotting (WB), Immunofluorescence (IF), Immunoprecipitation (IP)

## Product Details

Purpose:	Rabbit polyclonal antibody raised against a full-length human HOMER2 protein.
Immunogen:	HOMER2 (NP_004830.2, 1 a.a. ~ 343 a.a) full-length human protein.
Sequence:	MGEQPIFTTR AHVFQIDPNT KKNWMPASKQ AVTVSYFYDV TRNSYRIISV DGAKVIINST ITPNMTFTKT SQKFGQWADS RANTVFGLGF SSEQQLTKFA EKFAQEVEKAA KIAKDKTQEK IETSSNHSQA SSVNGTDDEK ASHAGPANTH LKSENDKDKI ALTQSAANVK KWEIELQTLR ESNARLTTAL QESAASVEQW KRQFSICRDE NDRLRNKIDE LEEQCSEINR EKEKNTQLKR RIEELEAELR EKETELKDLR KQSEIIPQLM SECEYVSEKL EAAERDNQNL EDKVRSLKTD IEESKYRQRH LKVELKSFLV VLDGKIDDLH DFRRGLSKLG TDN
Cross-Reactivity:	Human, Mouse
Characteristics:	Antibody reactive against mammalian transfected lysate.

## Target Details

Target:	HOMER2
Alternative Name:	HOMER2 ( <a href="#">HOMER2 Products</a> )
Background:	Full Gene Name: homer homolog 2 (Drosophila) Synonyms: ACPD,CPD,HOMER-2,HOMER2A,HOMER2B,Vesl-2
Gene ID:	9455
NCBI Accession:	<a href="#">NM_004839</a>
Pathways:	<a href="#">Synaptic Membrane</a> , <a href="#">Regulation of G-Protein Coupled Receptor Protein Signaling</a>

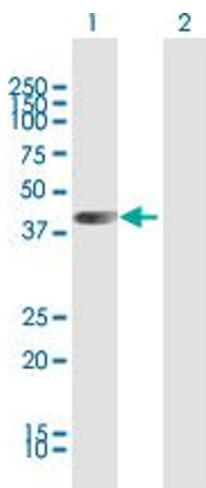
## Application Details

Application Notes:	Optimal working dilution should be determined by the investigator.
Restrictions:	For Research Use only

## Handling

Format:	Liquid
Buffer:	No additive
Preservative:	Without preservative
Handling Advice:	Aliquot to avoid repeated freezing and thawing.
Storage:	-20 °C
Storage Comment:	Store at -20°C or lower. Aliquot to avoid repeated freezing and thawing.

## Images

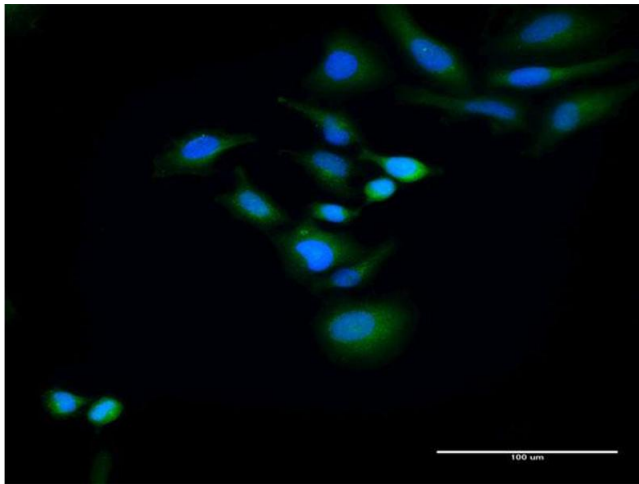


### Western Blotting

**Image 1.** Western Blot analysis of HOMER2 expression in transfected 293T cell line by HOMER2 MaxPab polyclonal antibody.

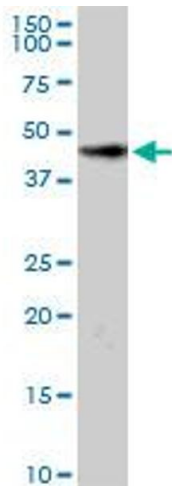
Lane 1: HOMER2 transfected lysate(39.5 KDa).

Lane 2: Non-transfected lysate.



### Immunofluorescence

**Image 2.** Immunofluorescence of purified MaxPab antibody to HOMER2 on HeLa cell. [antibody concentration 30 µg/ml]



### Western Blotting

**Image 3.** HOMER2 MaxPab rabbit polyclonal antibody. Western Blot analysis of HOMER2 expression in mouse brain.

Please check the [product details page](#) for more images. Overall 5 images are available for ABIN522915.