



[Go to Product page](#)

Datasheet for ABIN522950
anti-C1orf38 antibody (AA 1-132)

1 Image

Overview

Quantity:	50 µg
Target:	C1orf38
Binding Specificity:	AA 1-132
Reactivity:	Human
Host:	Mouse
Clonality:	Polyclonal
Conjugate:	This C1orf38 antibody is un-conjugated
Application:	Western Blotting (WB)

Product Details

Purpose:	Mouse polyclonal antibody raised against a full-length human C1orf38 protein.
Immunogen:	C1orf38 (AAH81568.1, 1 a.a. ~ 132 a.a) full-length human protein.
Sequence:	MHLGIRSARC VLGMEGQQVI LHLPLSQKGP FWTWEPSAPR TLLQVLQDPA LKDLVLTCP LPWHSILLRP QYEIQAIMHS ELPGQMDARC WGRERGLPLG AALMEDTPTP SLRISWNFRL LPLYYTEVIL FF
Cross-Reactivity:	Human
Characteristics:	Antibody reactive against mammalian transfected lysate.

Target Details

Target:	C1orf38
---------	---------

Target Details

Alternative Name:	C1orf38 (C1orf38 Products)
Background:	Full Gene Name: chromosome 1 open reading frame 38 Synonyms: ICB-1
Gene ID:	9473

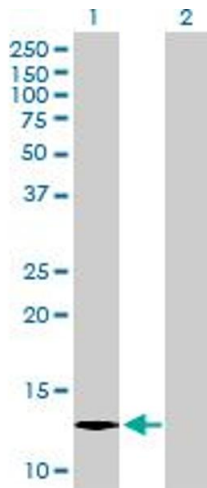
Application Details

Application Notes:	Optimal working dilution should be determined by the investigator.
Restrictions:	For Research Use only

Handling

Buffer:	In 1x PBS, pH 7.4
Handling Advice:	Aliquot to avoid repeated freezing and thawing.
Storage:	-20 °C
Storage Comment:	Store at -20°C or lower. Aliquot to avoid repeated freezing and thawing.

Images



Western Blotting

Image 1. Western Blot analysis of C1orf38 expression in transfected 293T cell line by C1orf38 MaxPab polyclonal antibody.

Lane 1: C1orf38 transfected lysate(14.52 KDa).

Lane 2: Non-transfected lysate.