

[Go to Product page](#)

Datasheet for ABIN523000

anti-LITAF antibody (AA 1-161)

4 Images

Overview

| | |
|----------------------|---|
| Quantity: | 50 µg |
| Target: | LITAF |
| Binding Specificity: | AA 1-161 |
| Reactivity: | Human |
| Host: | Mouse |
| Clonality: | Polyclonal |
| Conjugate: | This LITAF antibody is un-conjugated |
| Application: | Western Blotting (WB), Immunofluorescence (IF), Immunohistochemistry (Paraffin-embedded Sections) (IHC (p)) |

Product Details

| | |
|-------------------|---|
| Purpose: | Mouse polyclonal antibody raised against a full-length human LITAF protein. |
| Immunogen: | LITAF (NP_004853.2, 1 a.a. ~ 161 a.a) full-length human protein. |
| Sequence: | MSVPGPYQAA TGPSSAPSAP PSYEETVAVN SYYPTPPAPM PGPTTGLVTG PDGKGMNPPS YYTQPAPIPN NNPITVQTVY VQHPITFLDR PIQMCCPSCN KMIVSQLSYN AGALTWLSCG SLCLLGCIAG CCFIPFCVDA LQDVDHYCPN CRALLGTYKR L |
| Cross-Reactivity: | Human |
| Characteristics: | Antibody reactive against mammalian transfected lysate. |

Target Details

| | |
|---------|-------|
| Target: | LITAF |
|---------|-------|

Target Details

Alternative Name: LITAF ([LITAF Products](#))

Name:

Background: Full Gene Name: lipopolysaccharide-induced TNF factor

Synonyms:

FLJ38636,MGC116698,MGC116700,MGC116701,MGC125274,MGC125275,MGC125276,PIG7,SIMPLE,TP53I7

Gene ID: 9516

NCBI [NM_004862](#)

Accession:

Pathways: [Cellular Response to Molecule of Bacterial Origin](#)

Application Details

Application Notes: Optimal working dilution should be determined by the investigator.

Restrictions: For Research Use only

Handling

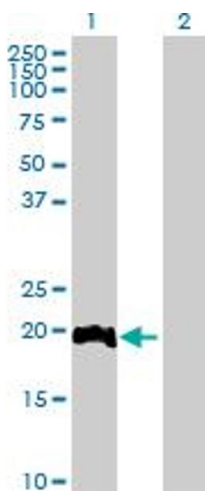
Buffer: In 1x PBS, pH 7.4

Handling Advice: Aliquot to avoid repeated freezing and thawing.

Storage: -20 °C

Storage Comment: Store at -20°C or lower. Aliquot to avoid repeated freezing and thawing.

Images

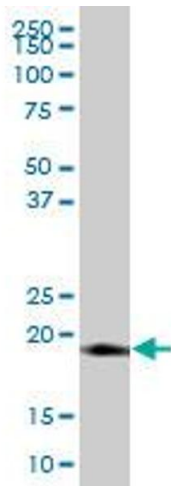


Western Blotting

Image 1. Western Blot analysis of LITAF expression in transfected 293T cell line by LITAF MaxPab polyclonal antibody.

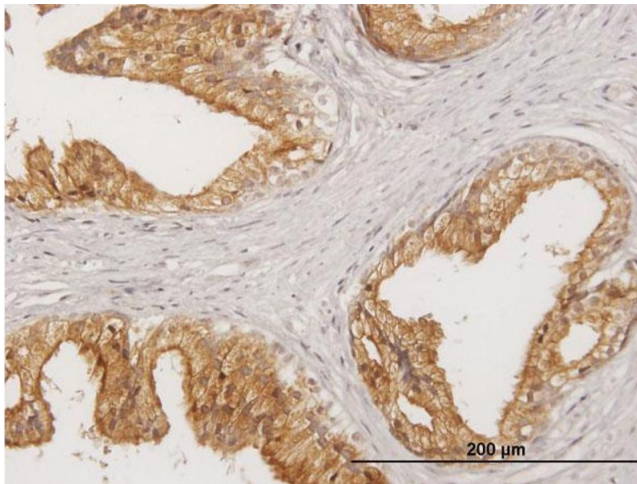
Lane 1: LITAF transfected lysate(17.71 kDa).

Lane 2: Non-transfected lysate.



Western Blotting

Image 2. LITAF MaxPab polyclonal antibody. Western Blot analysis of LITAF expression in human placenta.



Immunostaining

Image 3. Immunoperoxidase of purified MaxPab antibody to LITAF on formalin-fixed paraffin-embedded human prostate. [antibody concentration 3 ug/ml]

Please check the [product details page](#) for more images. Overall 4 images are available for ABIN523000.