



Datasheet for ABIN523003  
**anti-EEF1E1 antibody (AA 1-174)**



[Go to Product page](#)

3 Images

Overview

|                      |  |
|----------------------|--|
| Quantity:            | 50 µg  |
| Target:              | EEF1E1   |
| Binding Specificity: | AA 1-174                                       |
| Reactivity:          | Human  |
| Host:                | Mouse  |
| Clonality:           | Polyclonal                                     |
| Conjugate:           | This EEF1E1 antibody is un-conjugated          |
| Application:         | Western Blotting (WB), Immunofluorescence (IF) |

Product Details

|                   |  |
|-------------------|--|
| Purpose:          | Mouse polyclonal antibody raised against a full-length human EEF1E1 protein.   |
| Immunogen:        | EEF1E1 (NP_004271.1, 1 a.a. ~ 174 a.a) full-length human protein.  |
| Sequence:         | MAAAAELSLLEKSLGLSKGNKYS AQGERQIPVLQTNNGPSLTGLTTIAAHLVKQANKEYL<br>LGSTAEKAI VQQWLEYRVTQVDGHSSKNDIHTLLKDLNSYLEDKVYLTGYNFTLADILL<br>YYGLHRFIVDLTVQEKEKYLNVSRWFCHIQHYPGIRQHLSVVFIGNRLYTNSH |
| Cross-Reactivity: | Human  |
| Characteristics:  | Antibody reactive against mammalian transfected lysate.  |

Target Details

|         |        |
|---------|--------|
| Target: | EEF1E1 |
|---------|--------|

## Target Details

|                   |   |
|-------------------|---|
| Alternative Name: | EEF1E1 ( <a href="#">EEF1E1 Products</a> )  |
| Background:       | Full Gene Name: eukaryotic translation elongation factor 1 epsilon 1<br>Synonyms: AIMP3,P18 |
| Gene ID:          | 9521  |
| NCBI Accession:   | <a href="#">NM_004280</a>   |
| Pathways:         | <a href="#">Positive Regulation of Response to DNA Damage Stimulus</a>                      |

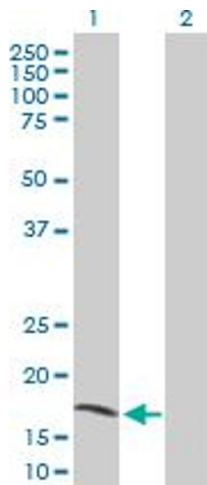
## Application Details

|                    |  |
|--------------------|--|
| Application Notes: | Optimal working dilution should be determined by the investigator. |
| Restrictions:      | For Research Use only  |

## Handling

|                  |  |
|------------------|--|
| Buffer:          | In 1x PBS, pH 7.4  |
| Handling Advice: | Aliquot to avoid repeated freezing and thawing.                          |
| Storage:         | -20 °C   |
| Storage Comment: | Store at -20°C or lower. Aliquot to avoid repeated freezing and thawing. |

## Images

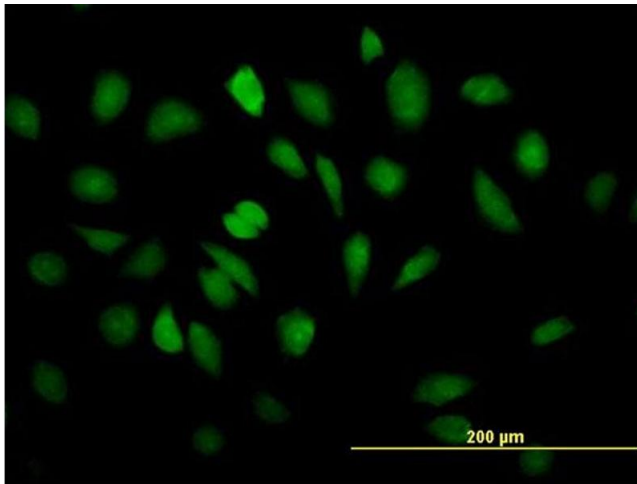


### Western Blotting

**Image 1.** Western Blot analysis of EEF1E1 expression in transfected 293T cell line by EEF1E1 MaxPab polyclonal antibody.

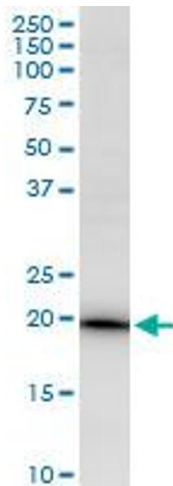
Lane 1: EEF1E1 transfected lysate(19.14 kDa).

Lane 2: Non-transfected lysate.



### Immunofluorescence

**Image 2.** Immunofluorescence of purified MaxPab antibody to EEF1E1 on HeLa cell. [antibody concentration 10 ug/ml]



### Western Blotting

**Image 3.** EEF1E1 MaxPab polyclonal antibody. Western Blot analysis of EEF1E1 expression in HepG2.