



[Go to Product page](#)

Datasheet for ABIN523023

anti-Prostaglandin E Synthase antibody (AA 1-152)

3 Images

Overview

Quantity:	50 µg
Target:	Prostaglandin E Synthase (PTGES)
Binding Specificity:	AA 1-152
Reactivity:	Human
Host:	Mouse
Clonality:	Polyclonal
Conjugate:	This Prostaglandin E Synthase antibody is un-conjugated
Application:	Western Blotting (WB), Immunofluorescence (IF)

Product Details

Purpose:	Mouse polyclonal antibody raised against a full-length human PTGES protein.
Immunogen:	PTGES (NP_004869.1, 1 a.a. ~ 152 a.a) full-length human protein.
Sequence:	MPAHSLVMSS PALPAFL LCS TLLVIKMYVV AITGQVRLR KKAFANPEDA LRHGGPQYCR SDPDVERCLR AHRNDMETIY PFLFLGFVYS FLGPNPFVAW MHFLVFLVGR VAHTVAYLGK LRAPIRSVTY TLAQLPCASM ALQILWEAAR HL
Cross-Reactivity:	Human
Characteristics:	Antibody reactive against mammalian transfected lysate.

Target Details

Target:	Prostaglandin E Synthase (PTGES)
---------	----------------------------------

Target Details

Alternative Name:	PTGES (PTGES Products)
Background:	Full Gene Name: prostaglandin E synthase Synonyms: MGC10317,MGST-IV,MGST1-L1,MGST1L1,MPGES,PGES,PIG12,PP102,PP1294,TP53I12,mPGES-1
Gene ID:	9536
NCBI Accession:	NM_004878

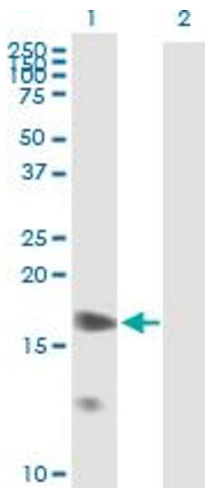
Application Details

Application Notes:	Optimal working dilution should be determined by the investigator.
Restrictions:	For Research Use only

Handling

Buffer:	In 1x PBS, pH 7.4
Handling Advice:	Aliquot to avoid repeated freezing and thawing.
Storage:	-20 °C
Storage Comment:	Store at -20°C or lower. Aliquot to avoid repeated freezing and thawing.

Images

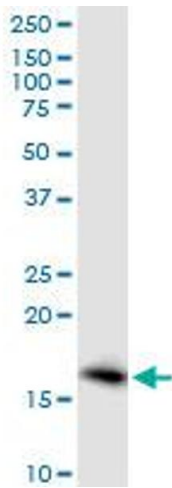


Western Blotting

Image 1. Western Blot analysis of PTGES expression in transfected 293T cell line by PTGES MaxPab polyclonal antibody.

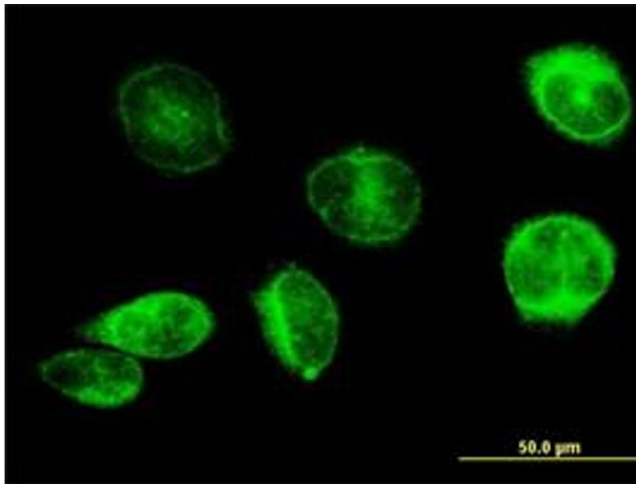
Lane 1: PTGES transfected lysate(16.72 KDa).

Lane 2: Non-transfected lysate.



Western Blotting

Image 2. PTGES MaxPab polyclonal antibody. Western Blot analysis of PTGES expression in HeLa.



Immunofluorescence

Image 3. Immunofluorescence of purified MaxPab antibody to PTGES on HeLa cell. (antibody concentration 10 μg/mL)