



[Go to Product page](#)

Datasheet for ABIN523088

anti-MAD2L1BP antibody (AA 1-306)

3 Images

Overview

Quantity:	50 µg
Target:	MAD2L1BP
Binding Specificity:	AA 1-306
Reactivity:	Human
Host:	Mouse
Clonality:	Polyclonal
Conjugate:	This MAD2L1BP antibody is un-conjugated
Application:	Western Blotting (WB), Immunofluorescence (IF)

Product Details

Purpose:	Mouse polyclonal antibody raised against a full-length human MAD2L1BP protein.
Immunogen:	MAD2L1BP (NP_001003690, 1 a.a. ~ 306 a.a) full-length human protein.
Sequence:	MARVPLGRSL TLSPRLEHNG MTAHHNFRL PGRDSPASA SQVAEIIDLE WYKSEETHA SQIELLETSS TQEPLNASEA FCPRDCMVPV VFPGPVSQEG CCQFTCELLK HIMYQRQQLP LPYEQLKHFY RKPSPQAEEM LKKKPRATTE VSSRKCQQAL AELESVLSHL EDFPARTLVP RVLILLGGNA LSPKEFYELD LSLAPYSVD QSLSTAACLRLRFRAIFMAD AFSELQAPPL MGTVVMAQGH RNCGEDWFRP KLNRYVPSRG HKLTVTLSCG RPSIRTTAWE DYIWFQAPVT FKGFRE
Cross-Reactivity:	Human
Characteristics:	Antibody reactive against mammalian transfected lysate.

Target Details

Target:	MAD2L1BP
Alternative Name:	MAD2L1BP (MAD2L1BP Products)
Background:	Full Gene Name: MAD2L1 binding protein Synonyms: CMT2,KIAA0110,MGC11282,RP1-261G23.6
Gene ID:	9587
NCBI Accession:	NM_001003690

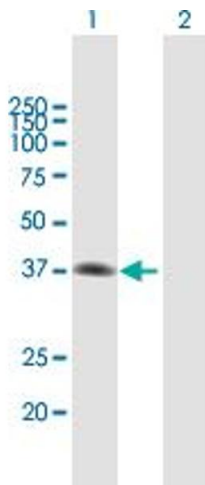
Application Details

Application Notes:	Optimal working dilution should be determined by the investigator.
Restrictions:	For Research Use only

Handling

Buffer:	In 1x PBS, pH 7.4
Handling Advice:	Aliquot to avoid repeated freezing and thawing.
Storage:	-20 °C
Storage Comment:	Store at -20°C or lower. Aliquot to avoid repeated freezing and thawing.

Images

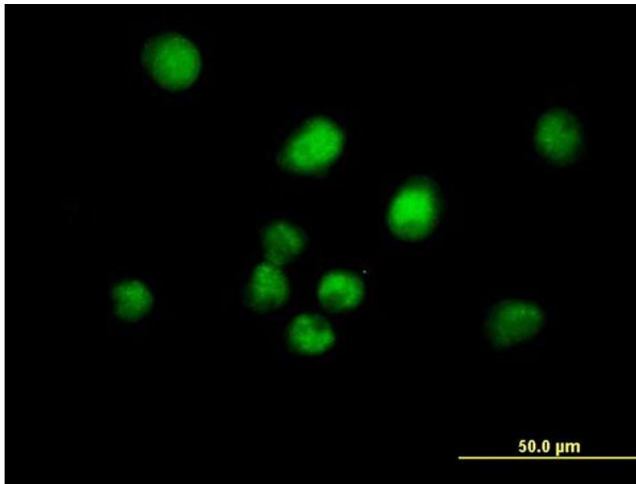


Western Blotting

Image 1. Western Blot analysis of MAD2L1BP expression in transfected 293T cell line by MAD2L1BP MaxPab polyclonal antibody.

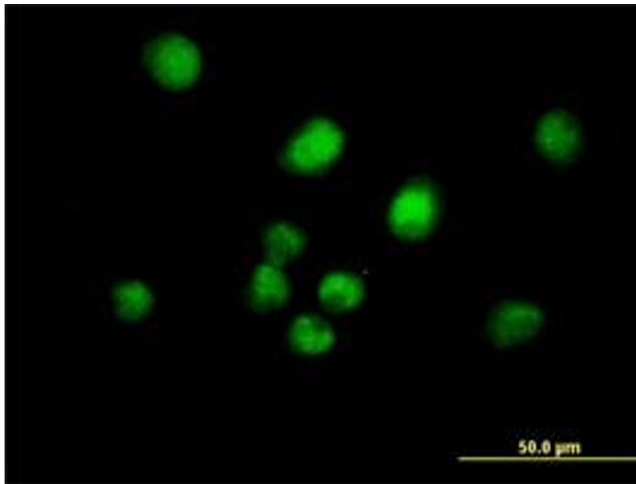
Lane 1: MAD2L1BP transfected lysate(33.66 KDa).

Lane 2: Non-transfected lysate.



Immunofluorescence

Image 2. Immunofluorescence of purified MaxPab antibody to MAD2L1BP on HeLa cell. [antibody concentration 10 ug/ml]



Immunofluorescence

Image 3. Immunofluorescence of purified MaxPab antibody to MAD2L1BP on HeLa cell. (antibody concentration 10 μg/mL)