



Datasheet for ABIN523089
anti-MAD2L1BP antibody (AA 1-306)



[Go to Product page](#)

3 Images

Overview

Quantity:	100 µL
Target:	MAD2L1BP
Binding Specificity:	AA 1-306
Reactivity:	Human
Host:	Rabbit
Clonality:	Polyclonal
Conjugate:	This MAD2L1BP antibody is un-conjugated
Application:	Western Blotting (WB), Immunoprecipitation (IP)

Product Details

Purpose:	Rabbit polyclonal antibody raised against a full-length human MAD2L1BP protein.
Immunogen:	MAD2L1BP (NP_001003690.1, 1 a.a. ~ 306 a.a) full-length human protein.
Sequence:	MARVPLGRSL TLSPRLEHNG MTAHHNFRL PGRDPSASA SQVAEIIDLE WYKSEETHA SQIELLETSS TQEPLNASEA FCPRDCMVPV VFPGPVSQEG CCQFTCELLK HIMYQRQQLP LPYEQLKHFY RKPSPQAEEM LKKKPRATTE VSSRKCQQAL AELESVLSHL EDDFARTLVP RVLILLGGNA LSPKEFYELD LSLAPYSVD QSLSTAACLRLRFRAIFMAD AFSELQAPPL MGTVVMAQGH RNCGEDWFRP KLNRYVPSRG HKLTVTLSCG RPSIRTTAWE DYIWFQAPVT FKGFRE
Cross-Reactivity:	Human, Mouse
Characteristics:	Antibody reactive against mammalian transfected lysate.

Target Details

Target:	MAD2L1BP
Alternative Name:	MAD2L1BP (MAD2L1BP Products)
Background:	Full Gene Name: MAD2L1 binding protein Synonyms: CMT2,KIAA0110,MGC11282,RP1-261G23.6
Gene ID:	9587
NCBI Accession:	NM_001003690

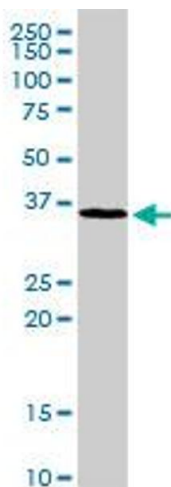
Application Details

Application Notes:	Optimal working dilution should be determined by the investigator.
Restrictions:	For Research Use only

Handling

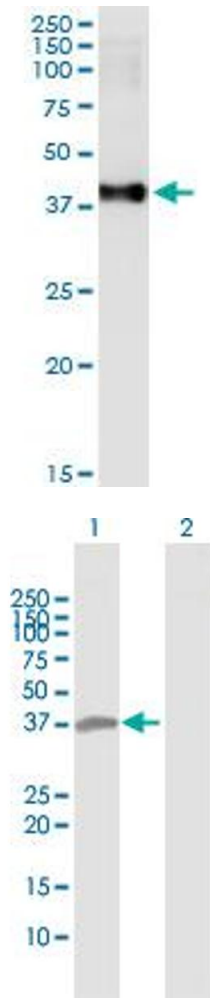
Format:	Liquid
Buffer:	No additive
Preservative:	Without preservative
Handling Advice:	Aliquot to avoid repeated freezing and thawing.
Storage:	-20 °C
Storage Comment:	Store at -20°C or lower. Aliquot to avoid repeated freezing and thawing.

Images



Western Blotting

Image 1. MAD2L1BP MaxPab rabbit polyclonal antibody. Western Blot analysis of MAD2L1BP expression in mouse liver.



Immunoprecipitation

Image 2. Immunoprecipitation of MAD2L1BP transfected lysate using anti-MAD2L1BP MaxPab rabbit polyclonal antibody and Protein A Magnetic Bead , and immunoblotted with MAD2L1BP purified MaxPab mouse polyclonal antibody (B02P) .

Western Blotting

Image 3. Western Blot analysis of MAD2L1BP expression in transfected 293T cell line by MAD2L1BP MaxPab polyclonal antibody.

Lane 1: MAD2L1BP transfected lysate(34.70 kDa).

Lane 2: Non-transfected lysate.