



[Go to Product page](#)

Datasheet for ABIN523092

## anti-MAD2L1BP antibody (AA 171-274)

### 1 Image

#### Overview

Quantity:	100 µg
Target:	MAD2L1BP
Binding Specificity:	AA 171-274
Reactivity:	Human
Host:	Mouse
Clonality:	Monoclonal
Conjugate:	This MAD2L1BP antibody is un-conjugated
Application:	ELISA, Immunoprecipitation (IP)

#### Product Details

Purpose:	Mouse monoclonal antibody raised against a partial recombinant MAD2L1BP.
Immunogen:	MAD2L1BP (NP_055443.1, 171 a.a. ~ 274 a.a) partial recombinant protein with GST tag. MW of the GST tag alone is 26 KDa.
Sequence:	LLAPYSVDQS LSTAACLRRRL FRAIFMADAF SELQAPPLMG TVVMAQGHRN CGEDWFRPKL NYRVPSRGHK LVTLSGCRP SIRTAWEDY IWFQAPVTFK GFRE
Clone:	4B9
Isotype:	IgG2a
Cross-Reactivity:	Human
Characteristics:	Antibody Reactive Against Recombinant Protein.

## Target Details

Target:	MAD2L1BP
Alternative Name:	MAD2L1BP ( <a href="#">MAD2L1BP Products</a> )
Background:	Full Gene Name: MAD2L1 binding protein Synonyms: CMT2,KIAA0110,MGC11282,RP1-261G23.6
Gene ID:	9587
NCBI Accession:	<a href="#">NM_014628</a>

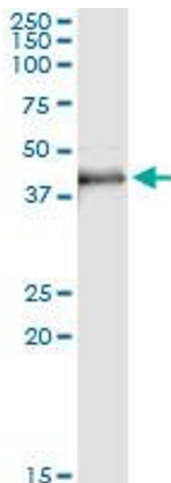
## Application Details

Application Notes:	Optimal working dilution should be determined by the investigator.
Restrictions:	For Research Use only

## Handling

Buffer:	In 1x PBS, pH 7.4
Handling Advice:	Aliquot to avoid repeated freezing and thawing.
Storage:	-20 °C
Storage Comment:	Store at -20°C or lower. Aliquot to avoid repeated freezing and thawing.

## Images



### Immunoprecipitation

**Image 1.** Immunoprecipitation of MAD2L1BP transfected lysate using anti-MAD2L1BP monoclonal antibody and Protein A Magnetic Bead , and immunoblotted with MAD2L1BP MaxPab rabbit polyclonal antibody.