



[Go to Product page](#)

Datasheet for ABIN523096
anti-IER2 antibody (AA 1-223)

1 Image

Overview

Quantity:	50 µg
Target:	IER2
Binding Specificity:	AA 1-223
Reactivity:	Human
Host:	Mouse
Clonality:	Polyclonal
Conjugate:	This IER2 antibody is un-conjugated
Application:	Western Blotting (WB)

Product Details

Purpose:	Mouse polyclonal antibody raised against a full-length human IER2 protein.
Immunogen:	IER2 (NP_004898.2, 1 a.a. ~ 223 a.a) full-length human protein.
Sequence:	MEVQKEAQRIMTLVSWKMYH SRMQRGGLRL HRSLQLSLVM RSARELYLSA KVEALEPEVSLPAALPSDPR LHPPREAEST AETATPDGEH PFPEPMDTQE APTAEETSAC CAPRPAKVSRKRRSSSLSDG GDAGLVPSKK ARLEEKEEEE GASSEVADRL QPPPAQAEGA FPNLARVLQR RFSGLLNCSP AAPPTAPPAC EAKPACRPAD SMLNVLVRAV VAF
Cross-Reactivity:	Human
Characteristics:	Antibody reactive against mammalian transfected lysate.

Target Details

Target:	IER2
---------	------

Target Details

Alternative Name:	IER2 (IER2 Products)
Background:	Full Gene Name: immediate early response 2 Synonyms: ETR101,MGC111472,MGC15265
Gene ID:	9592
NCBI Accession:	NM_004907

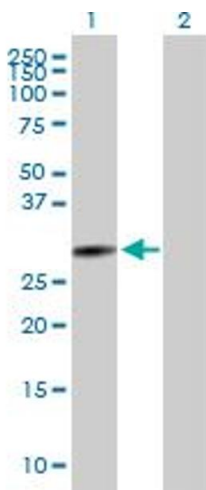
Application Details

Application Notes:	Optimal working dilution should be determined by the investigator.
Restrictions:	For Research Use only

Handling

Buffer:	In 1x PBS, pH 7.4
Handling Advice:	Aliquot to avoid repeated freezing and thawing.
Storage:	-20 °C
Storage Comment:	Store at -20°C or lower. Aliquot to avoid repeated freezing and thawing.

Images



Western Blotting

Image 1. Western Blot analysis of IER2 expression in transfected 293T cell line by IER2 MaxPab polyclonal antibody.

Lane1:IER2 transfected lysate(24.53 KDa).

Lane2:Non-transfected lysate.