



Datasheet for ABIN523111
anti-TRAF4 antibody (AA 1-470)



[Go to Product page](#)

3 Images

Overview

Quantity:	100 µg
Target:	TRAF4
Binding Specificity:	AA 1-470
Reactivity:	Human
Host:	Rabbit
Clonality:	Polyclonal
Conjugate:	This TRAF4 antibody is un-conjugated
Application:	Western Blotting (WB), Immunofluorescence (IF), Proximity Ligation Assay (PLA)

Product Details

Purpose:	Rabbit polyclonal antibody raised against a full-length human TRAF4 protein.
Immunogen:	TRAF4 (NP_004286.2, 1 a.a. ~ 470 a.a) full-length human protein.
Sequence:	MPGFDYKFLE KPKRRLLCPL CGKPMREPVQ VSTCGHRFCD TCLQEFLSEG VFKCPEDQLP LDYAKIYPDP ELEVQVLGLP IRCIHSEEGC RWSGPLRHLQ GHLNTCSFNV IPCPNRCPMK LSRRDLPAHL QHDCPKRRLK CEFCGCD FSG EAYESHEGMC PQESVYCENK CGARMMRLL AQHATSECPK RTQPCTYCTK EFVFDTIQSH QYQCPRLPVA CPNQCGVGTV AREDLPGHLK DSCNTALVLC PFKDSGCKHR CPKLAMARHV EESVKPHLAM MCALVSRQRQ ELQELRRELE ELSVGS DGV L IWKIGSYGRR LQEAKAKPNL ECFSPAFYTH KYGYKLQVSA FLNGNGSGEG THLSLYIRVL PGAFDNLEW PFARRVTFSL LDQSDPGLAK PQHVTETFHP DPNWKNFQKP GTWRGSLDES SLGFGYPKFI SHQDIRK RNY VRDDAVFIRA AVELPRKILS
Cross-Reactivity:	Human

Product Details

Characteristics: Antibody reactive against mammalian transfected lysate.

Target Details

Target: TRAF4

Alternative Name: TRAF4 ([TRAF4 Products](#))

Background: Full Gene Name: TNF receptor-associated factor 4
Synonyms: CART1,MLN62,RNF83

Gene ID: 9618

NCBI Accession: [NM_004295](#)

Application Details

Application Notes: Optimal working dilution should be determined by the investigator.

Restrictions: For Research Use only

Handling

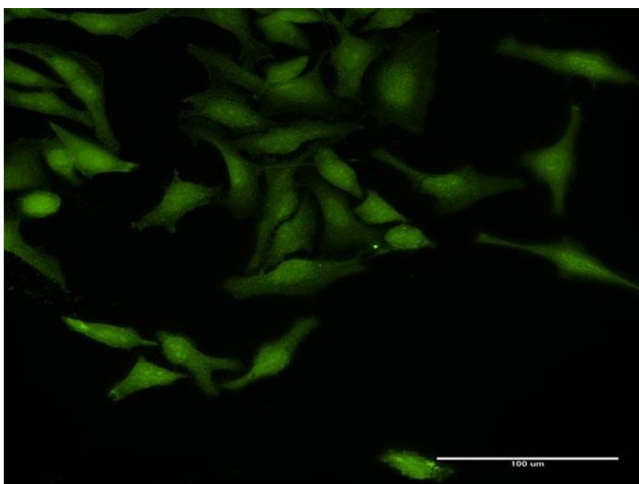
Buffer: In 1x PBS, pH 7.4

Handling Advice: Aliquot to avoid repeated freezing and thawing.

Storage: -20 °C

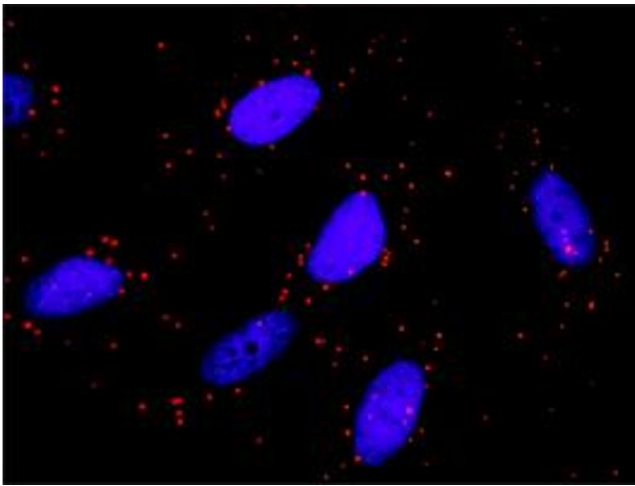
Storage Comment: Store at -20°C or lower. Aliquot to avoid repeated freezing and thawing.

Images



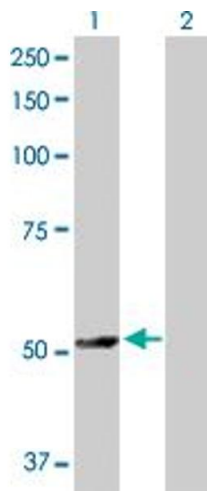
Immunofluorescence

Image 1. Immunofluorescence of purified MaxPab antibody to TRAF4 on HeLa cell. [antibody concentration 20 ug/ml]



Proximity Ligation Assay

Image 2. Proximity Ligation Analysis of protein-protein interactions between TRAF4 and TRAF6. HeLa cells were stained with anti-TRAF4 rabbit purified polyclonal 1:1200 and anti-TRAF6 mouse monoclonal antibody 1:50. Each red dot represents the detection of protein-protein interaction complex, and nuclei were counterstained with DAPI (blue).



Western Blotting

Image 3. Western Blot analysis of TRAF4 expression in transfected 293T cell line by TRAF4 MaxPab polyclonal antibody.

Lane 1: TRAF4 transfected lysate(53.50 KDa).

Lane 2: Non-transfected lysate.